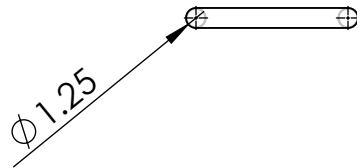


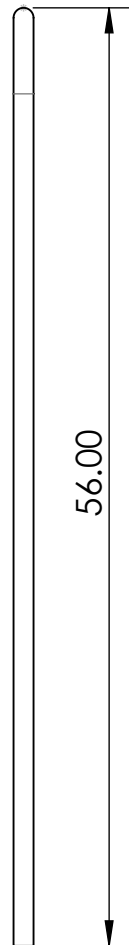
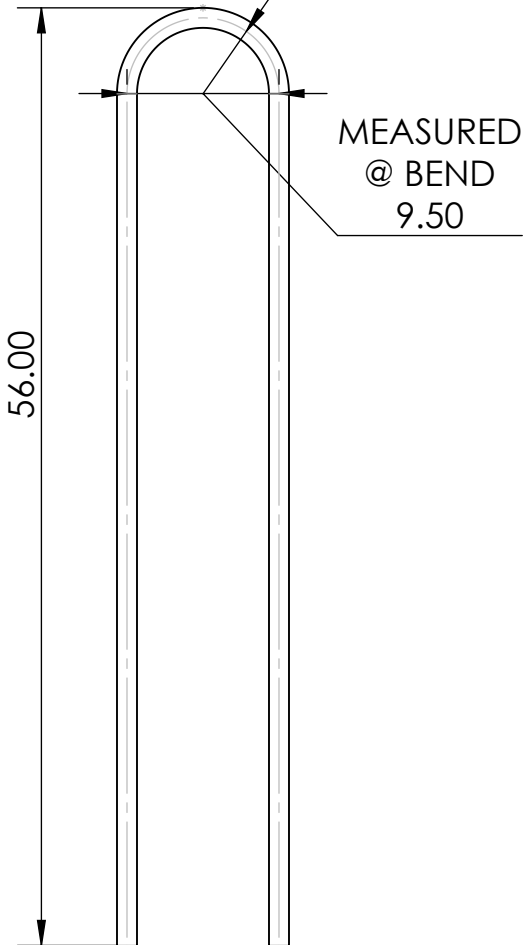
2

1



B

B



SG125

StraightGuard 9.5" Wide
 1.25" ϕ Tube
 Straight for InstrumentPods

A

A

Per ASTM A554
 1.25" dia $\pm .010$

PROPRIETARY AND CONFIDENTIAL
 THE INFORMATION CONTAINED IN THIS DRAWING IS THE SOLE PROPERTY OF <COMPANY NAME>. ANY REPRODUCTION IN PART OR AS A WHOLE WITHOUT THE WRITTEN PERMISSION OF <COMPANY NAME> IS PROHIBITED.

		DIMENSIONS ARE IN INCHES TOLERANCES: FRACTIONAL $\pm 1/8"$ ANGULAR: MACH $\pm 1^\circ$ BEND $\pm 1^\circ$ TWO PLACE DECIMAL ± 0.13 THREE PLACE DECIMAL ± 0.125	
		MATERIAL STAINLESS STEEL TUBE	
NEXT ASSY	USED ON	FINISH MIRROR POLISH	
APPLICATION		DO NOT SCALE DRAWING	

NAME	DATE
DRAWN MDJ	7/1/2014
CHECKED	
ENG APPR.	
MFG APPR.	
Q.A.	
COMMENTS: 1.25" x .065" dia 304 SS POLISHED	

OCEAN EQUIPMENT		
SG125 STRAIGHT GUARD 9.5" x 1.25" DIA 304SS TUBE		
SIZE A	DWG. NO. SG125	REV.
SCALE:1:12	WEIGHT:	SHEET 2 OF 2

2

1