



Volume 7 Winch Service Manual

LEWMAR®

Introduction

Lewmar is the world's leading manufacturer of yacht winches. Our manufacturing facilities set the highest standards in quality materials and performance. Each Lewmar winch is tested to ensure that all stages in the manufacturing process conform to the Lewmar requirements of dimensional accuracy, rated strength and operating efficiency. Our winches are approved to Lloyds standards and in practice are in excess of them. Lewmar winches are constantly being tested in the latest racing competition, onboard leading ocean racers around the world and, whether racing or cruising, they are rated for their long life and performance.

However, as with any precision engineered product, Lewmar winches need regular maintenance to operate at peak efficiency and, without this attention, permanent damage and premature wear can result.

This manual gives the most complete details of the sequence and techniques required to dismantle completely, service and assemble each winch in the Lewmar range.

Lewmar has a worldwide network of offices and distributors who carry stocks of spare parts and spare kits. Expert advice and assistance is available for any servicing or repair problem.

Guarantee

Lewmar winches have been developed over many years by extensive testing aboard the world's finest ocean racers, long distance cruising yachts and match racing yachts. They are manufactured to quality standards in excess of those required by Lloyds and only the finest materials are used.

If installed, used and maintained as described in this Manual they will give outstanding performance.

Warranty

For Lewmar Warranty details see page 19.

Service Notes

For satisfactory long term performance and product life these winches must be given the routine and full maintenance procedure described below.

1. MONTHLY: All Lewmar winches should be hosed down with fresh water then lightly oiled and greased as detailed in the separate free leaflet, "How to service your winch".
2. TWO OR THREE TIMES DURING ACTIVE SAILING SEASON: All Lewmar winches should be stripped, cleaned and relubricated.
3. AT THE END OF EACH SAILING SEASON OR BEFORE STARTING THE NEW SEASON: All Lewmar winches should be completely stripped, cleaned, thoroughly checked for damage, lubricated and reassembled as detailed in this Service Manual.

Dismantling

Lewmar winches are simple to dismantle and are designed for easy maintenance. The exploded view drawings show how the component parts can be removed easily from each winch.

Assembly

Winches must be assembled in the reverse sequence to the order of dismantling.

Mounting

All winches must be mounted using the correct size and type of retaining bolts. Having decided on the correct winch position, the drum must be removed as detailed in the maintenance instructions for mounting. The winch must be mounted on a flat clean surface.

The hole centres for the winch retaining bolts must be marked off and drilled separately. The winch should be bedded on a LIGHT coating of sealing compound to stop leaks - too much compound gets in the gears and pawls.

The winch retaining fastenings must be securely tightened (but not overtightened). The winch is self draining and care must be taken to ensure the drain holes are not blocked.

Handles

All current winches accept any standard international handle (Lewmar grey grip handle).

Recommended Lubricants

Grease - Lewmar Grease 7010 (Lubriplate Marine Lube 'A', etc).

Oil - Light Machine Oil (3-in-1 or equivalent)

Service and Spares

Full service facilities for Lewmar winches are provided at our factory, Subsidiary Companies, Distributors and Service centres worldwide.

Parts pricing is subject to change. Apply to your nearest Lewmar office or distributor for current price lists.

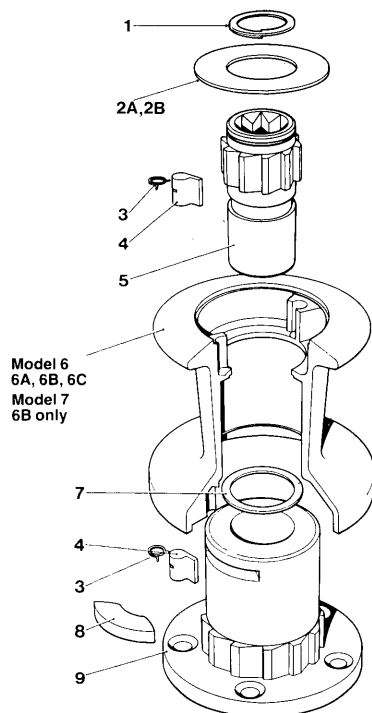
Contents Volume 7 Update

	Introduction Page Date (Mod.) No.
Single Speed Winches	
6, 7, 8	April '92 2
Two Speed Winches	
16	April '92 3
24, 30 & 40	April '92 4
43	April '92 5
Self-Tailing Winches	
16	April '92 6
30	April '92 7
40	April '92 8
44	April '92 9
48	April '92 10
50	April '92 11
54	April '92 12
58	April '92 13
62	April '92 14
66	April '92 15
Handles	April '92 16
Owners Service Log	17
Lewmar Warranty	18
Subsidiary Addresses	Back Cover

Spares Kit

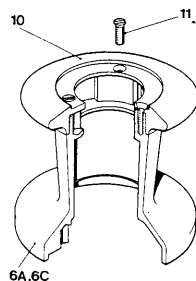
- 19700100 Basic Winch Servicing Kit** (4 circlips, pawls, pawl springs)
- 19700200 Winch Servicing Kit 4** (4 circlips, 8 pawls, 12 pawl springs, 3 keys, 2 pan head screws - self tailers)
- 19700300 Three Speed Winch Servicing Kit**
- 19700401 Pawl Springs x 50.**
- 19700501 Pawls small x 25.**
- 19700900 Allen Key Set.**
- 19701000 Grease.** Packed in handy 100g plastic tube.
- 19701100 Grease.** Packed in handy 300g plastic tub. This waterproof grease contains solid activation which aids the load carrying characteristics of a winch. It is also suitable for trailer wheel bearings, steering gear, hydraulic equipment, outboard engines and many other marine applications.
- 19701300 Naval Jelly.** Packed in handy 200ml jar. Removes tarnishing from stainless steel surfaces and protects the material. Ask your nearest Dealer/Distributor for a copy of the "How To Service Your Lewmar Winch", or buy:-
- Winch Maintenance Packs.*** 100g Tube of grease, 55ml HD 22 oil, Brush, 'How To' Booklet, Pawl Springs x 10.
- 19701410 German***
- 19701420 French***
- 19701430 Swedish***
- 19701440 Spanish***
- 19701500 English***

No.s 6/7/8

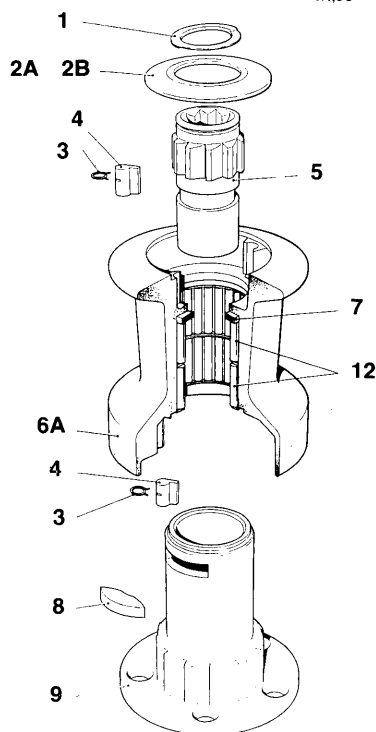


Model 6
6A, 6B, 6C
Model 7
6B only

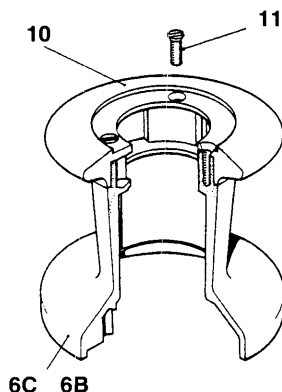
Model 7B, 7C only



6A, 6C



Model 8B, 8C only



6C 6B

No 6 - 1 SPEED WINCH

ITEM	PART No	DESCRIPTION	No Off
1	B2075	Circlip	1
2	45001000	Top Cap - Alloy Drum	1
3	1260/7	Pawl Spring	4
4	1260/8	Pawl	4
5	45001018	No 6/7 Spindle (Grey)	1
6	15000363	Drum Alloy (Black)	1
6a	45001014	Drum Alloy (Grey)	1
6b	15006102	Drum Chrome	1
6c	15000660	Drum Bronze	1
7	15006004	Washer	1
8	15006005	Key	1
9	15000144	Centre Stem	1

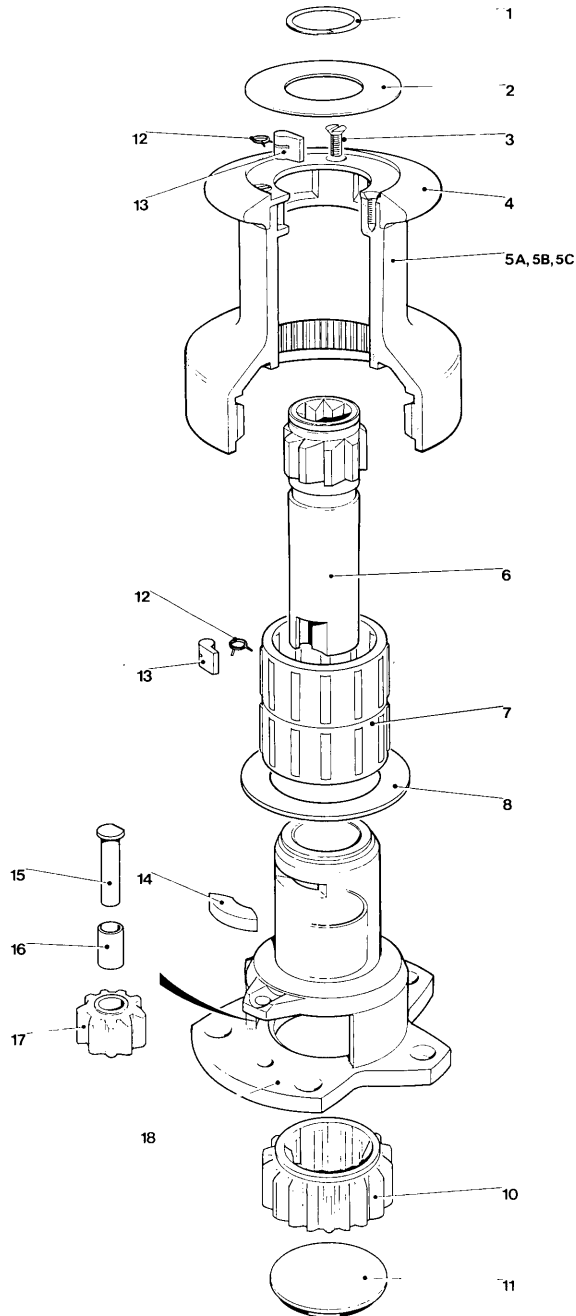
No 7 - 1 SPEED WINCH

ITEM	PART No	DESCRIPTION	No Off
1	B2075	Circlip	1
2	45001100	Top Cap - Alloy Drum	1
3	1260/7	Pawl Spring	4
4	1260/8	Pawl	4
5	45001018	No 6/7 Spindle (Grey)	1
6	45001113	Drum Alloy (Black)	1
6a	45001114	Drum Alloy (Grey)	1
6b	15000650	Drum Chrome	1
6c	15000661	Drum Bronze	1
7	15006004	Washer	1
8	15010005	Key	1
9	15000143	Centre Stem	1
10	45001109	No 7b & 7c Crown (Grey)	1
10a	45001108	Crown (Black)	1
11	15000527	M5x12mm Long Posidriv 7b & 7c - CSK HD Screw	3

No 8 - 1 SPEED WINCH

ITEM	PART No	DESCRIPTION	No Off
1	B2075	Circlip	1
2	45001200	8a - Top Cap	1
3	1260/7	Pawl Spring	4
4	1260/8	Pawl	4
5	15008003	Spindle	1
6	45001113	Drum Alloy (Black)	1
6a	45001114	Drum Alloy (Grey)	1
6b	15000661	Drum Bronze	1
6c	15000650	Drum Chrome	1
7	15008004	Drum Washer	1
8	15008005	Key	1
9	15008001	Centre Stem	1
10	45001109	8b & 8c - Crown (Grey)	1
10a	45001108	8b & 8c - Crown (Black)	1
11	15000527	M5x12mm Long Posidriv 8b & 8c - CSK HD Screw	3
12	15008007	Roller Bearing Assy	2

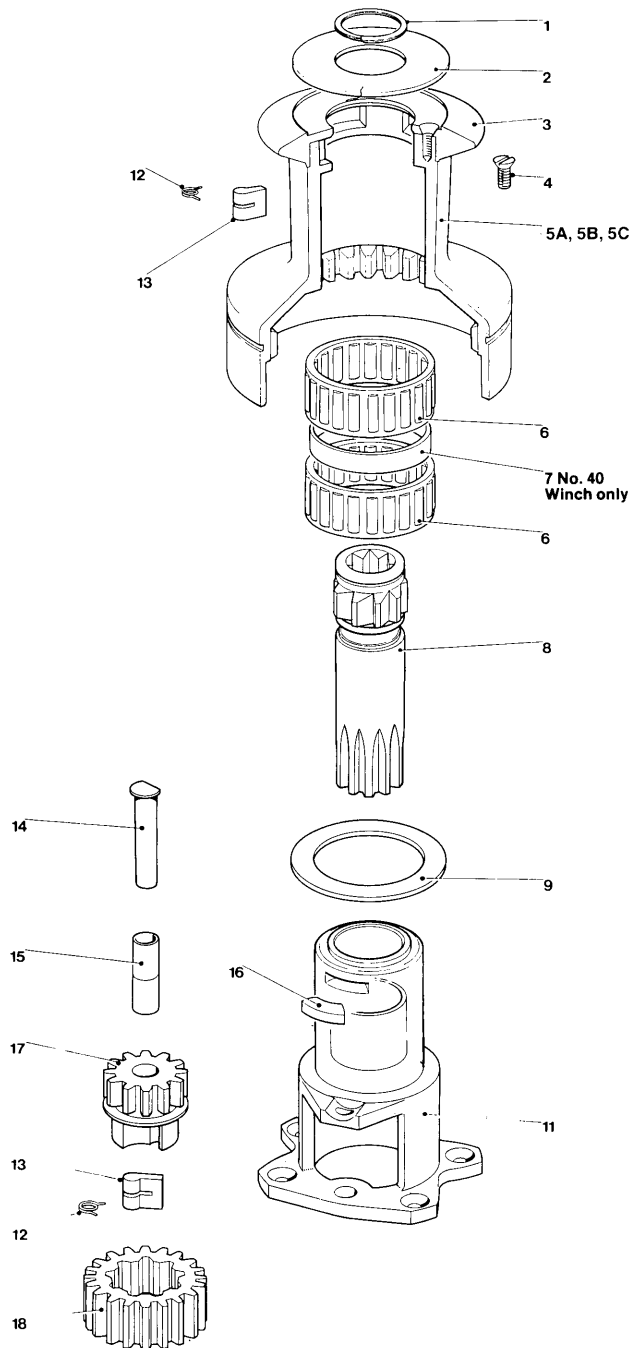
No. 16



No 16 - 2 SPEED WINCH

ITEM	PART No	DESCRIPTION	No Off
1	B2075	Circlip	1
2	45001300	Top Cap	1
3	15000527	CSK HD Posidriv Screw M5x12mm Long	3
4	45001108	Crown (Black)	1
4a	45001109	Crown (Grey)	1
5	45001314	Drum Alloy (Grey)	1
5a	15000454	Drum Alloy (Black)	1
5b	15000662	Drum Bronze	1
5c	15000453	Drum Chrome	1
6	15000829	Main Spindle	1
7	15008007	Roller Bearing Assy	2
8	15000466	Drum Washer	1
10	15000464	Ratchet Gear	1
11	15000461	Gear Retainer	1
12	1260/7	Pawl Spring	4
13	1260/8	Pawl	4
14	15008005	Key	1
15	15000463	Idler Spindle	1
16	45000033	Gear Spindle Sleeve	1
17	15000827	Idler Gear	1
18	18000530	Centre Stem	1

No.'s 24/30/40



No 24 - 2 SPEED WINCH

ITEM	PART No	DESCRIPTION	No Off
1	B2075	Circlip	1
2	45001400	Top Cap	1
3	45001109	Crown (Grey)	1
3A	45001108	Crown (Black)	1
4	15000527	CSK HD Posidriv Screw M5x12mm Long	3
5	45001414	Drum - Alloy (Grey)	1
5A	45000472	Drum Alloy - (Black)	1
5B	15000663	Drum - Bronze	1
5C	15000471	Drum - Chrome	1
6	15008007	Roller Bearing Assy	2
8	15000830	Main Spindle	1
9	15000376	Drum Washer	1
11	18000531	Centre Stem	1
12	1260/7	Pawl Spring	4
13	1260/8	Pawl	4
14	15000423	Gear Spindle	1
15	15000378	Gear Spindle Sleeve	2
16	15008005	Key	1
17	15000477	Pawl Gear	1
18	15000476	Ratchet Gear	1

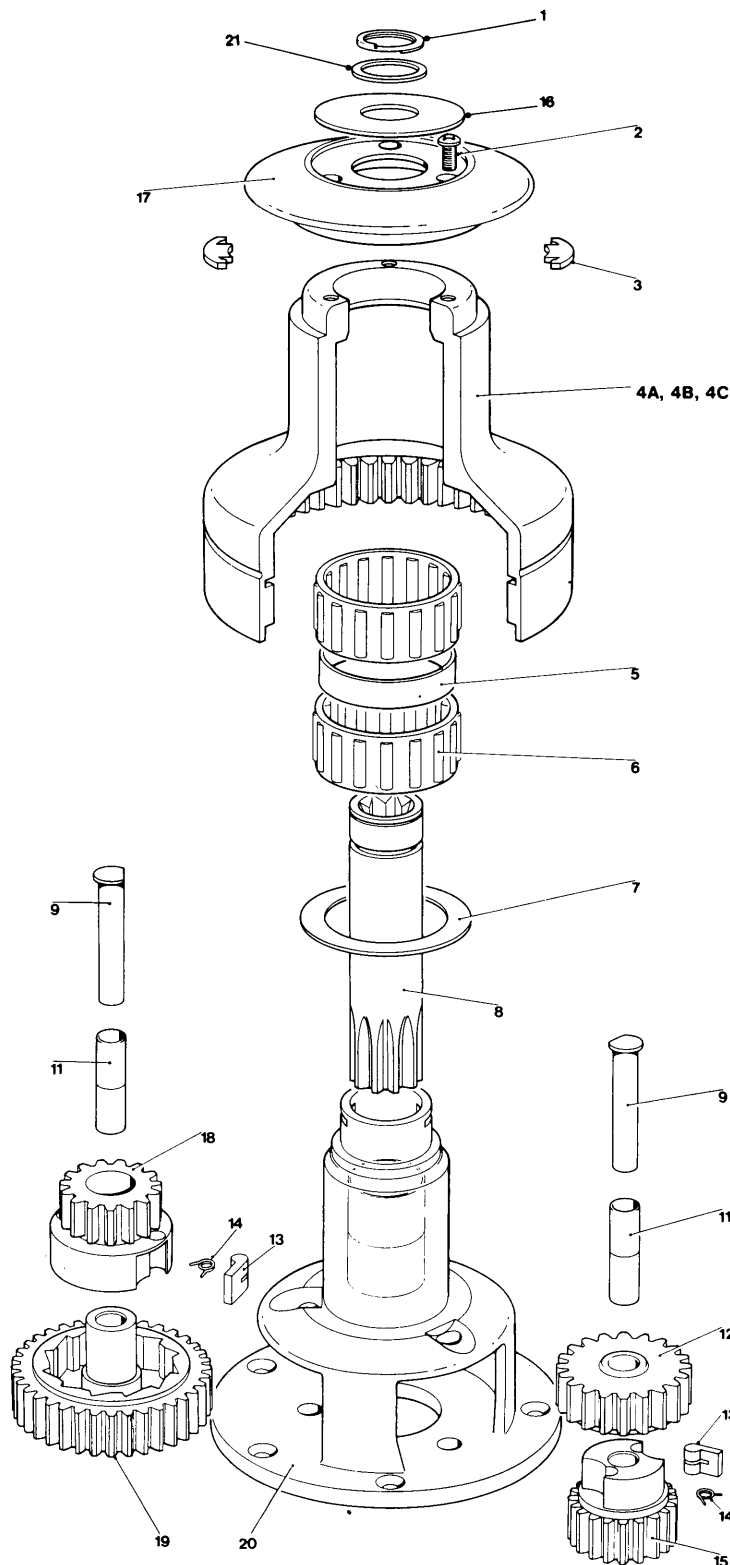
No 30 - 2 SPEED WINCH

ITEM	PART No	DESCRIPTION	No Off
1	B2075	Circlip	1
2	45001500	Top Cap	1
3	45001509	Crown (Grey)	1
3a	45001508	Crown (Black)	1
4	15000527	CSK HD Posidriv Screw M5x12mm Long	3
5	45001514	Drum - Alloy (Grey)	1
5a	15000447	Drum - Alloy (Black)	1
5b	15000664	Drum - Bronze	1
5c	15000448	Drum - Chrome	1
6	15008007	Roller Bearing Assy	2
8	15000830	Main Spindle	1
9	15000466	Drum Washer	1
11	18000532	Centre Stem	1
12	1260/7	Pawl Spring	4
13	1260/8	Pawl	4
14	15000385	Gear Spindle	1
15	15000378	Gear Spindle Sleeve	2
16	15008005	Key	1
17	15000470	Pawl Gear	1
18	15000469	Ratchet Gear	1

No 40 - 2 SPEED WINCH

ITEM	PART No	DESCRIPTION	No Off
1	B2075	Circlip	1
2	45001600	Top Cap	1
3	45001509	Crown (Grey)	1
3a	45001508	Crown (Black)	1
4	15000527	CSK HD Posidriv Screw M5x12mm Long	3
5	45001614	Drum - Alloy (Grey)	1
5a	15000493	Drum - Alloy (Black)	1
5b	15000665	Drum - Bronze	1
5c	15000492	Drum - Chrome	1
6	15008007	Roller Bearing Assy	2
7	15000491	Spacer	1
8	15000831	Main Spindle	1
9	15000466	Drum Washer	1
11	18000533	Centre Stem	1
12	1260/7	Pawl Spring	4
13	1260/8	Pawl	4
14	15000486	Gear Spindle	1
15	15000378	Gear Spindle Sleeve	2
16	15008005	Key	1
17	15000490	Pawl Gear	1
18	15000496	Ratchet Gear	1

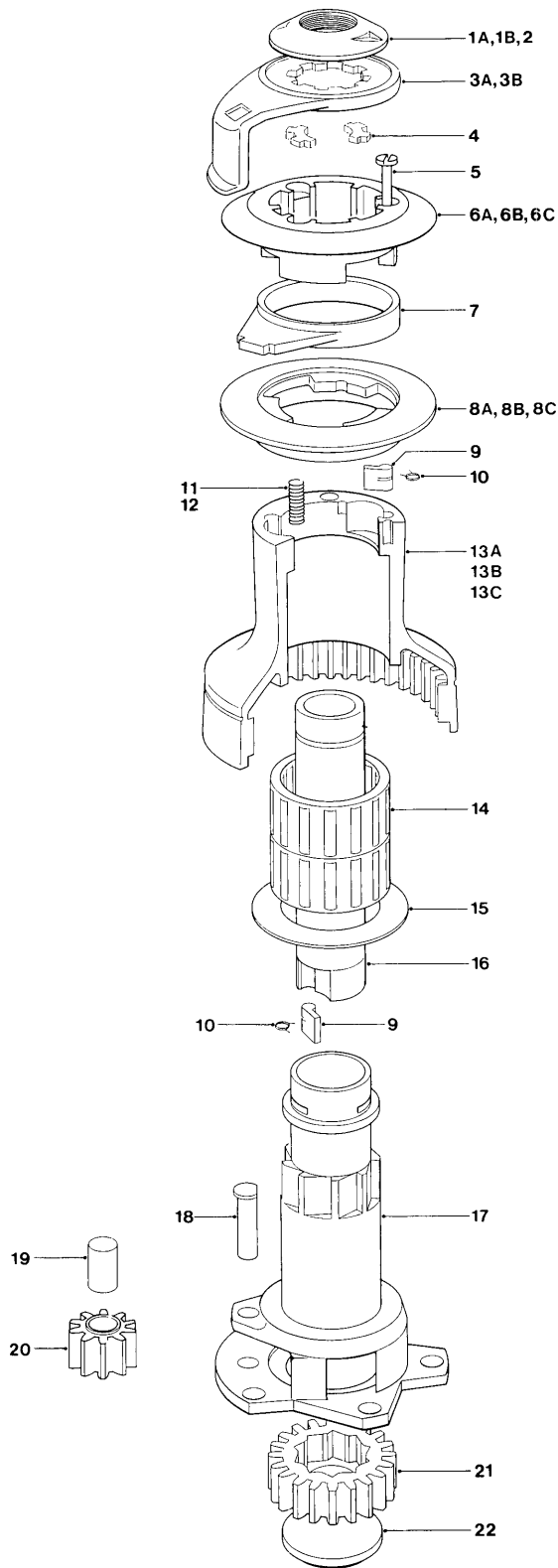
No. 43



No 43 - 2 SPEED WINCH

ITEM	PART No	DESCRIPTION	No Off
1	B2075	Circlip	1
2	B0325	Pan HD Posidriv Screw M5x12mm Long	3
3	15001430	Collet	2
4	45001714	Drum - Alloy (Grey)	1
4a	15000411	Drum - Alloy (Black)	1
4b	15000666	Drum - Bronze	1
4c	15000410	Drum - Chrome	1
5	15010008	Spacer	1
6	15010007	Roller Bearing Assy	2
7	15034638	Drum Washer	1
8	15000832	Main Spindle	1
9	15000422	Gear Spindle	2
11	15000398	Gear Spindle Sleeve	4
12	15000418	Ratchet Gear	1
13	1260/8	Pawl	4
14	1260/7	Pawl Spring	4
15	15000397	Pawl Gear	1
16	45001700	Top Cap	1
17	45001709	Crown (Grey)	1
17a	45001708	Crown (Black)	1
18	15000419	Pawl Gear	1
19	15000417	Ratchet Gear	1
20	18000534	Centre Stem	1
21	15000684	Washer	1

No. 16ST



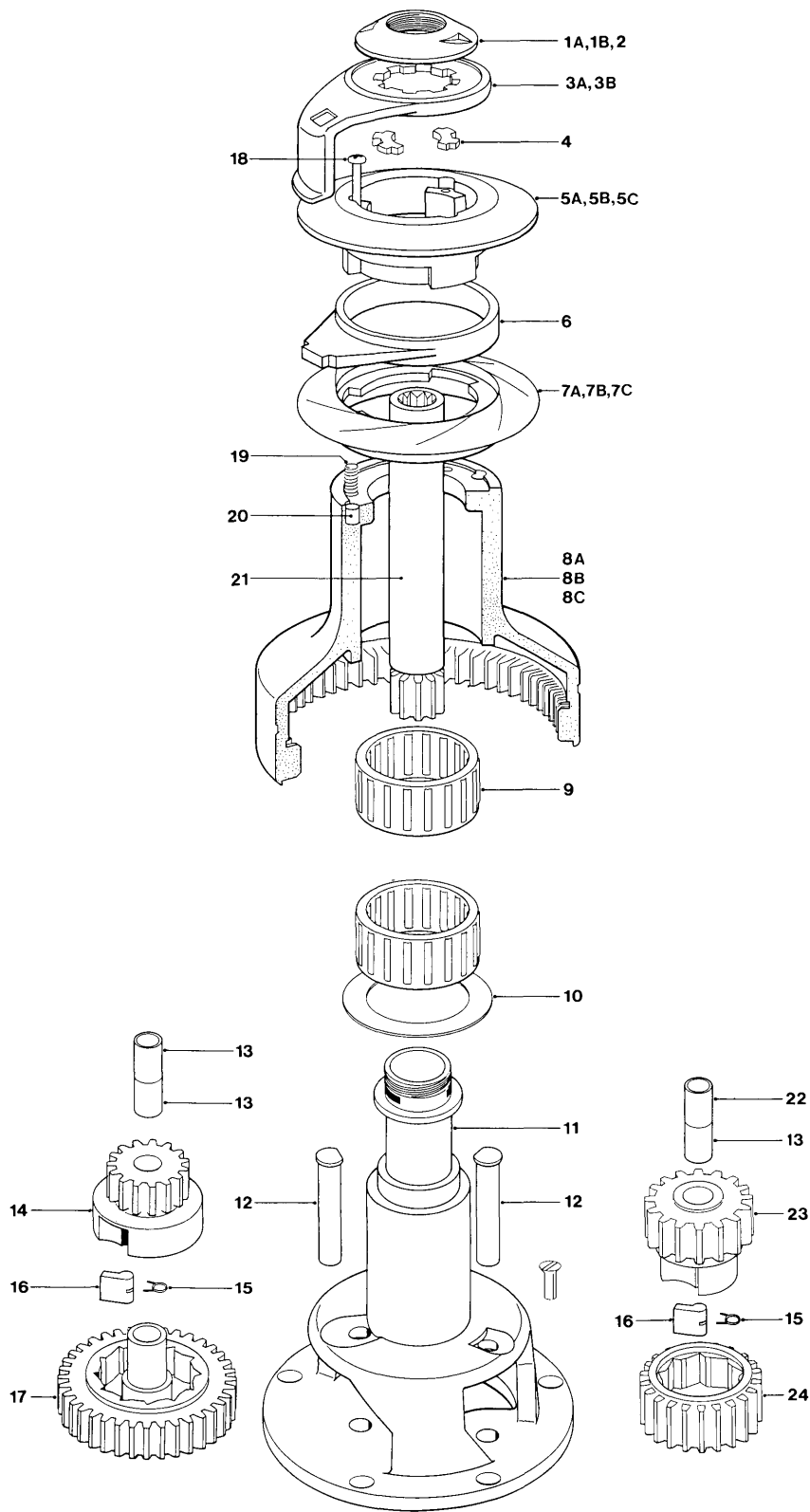
No 16 - 1 SPEED SELF TAILING WINCH

ITEM	PART No	DESCRIPTION	No Off
1a	45000000	Chromed Top Cap 16AST/16CST/16CCST	1
1b	45000001	Bronze Top Cap 16BST/16BBST	1
2	B6061	'O' Ring (Fitted in Item 1a/1b)	1
3a	45000003	Chrome Feeder Arm 16AST/16CST/16CCST	1
3b	45000004	Bronze Feeder Arm 16BST/ 16BBST	1
4	45000102	Collet	2
5	45000064	M5x30 S/S Posidriv Pan HD Screw	3
6	45000085	Upper Crown (Black) Assy	1
6a	45000005	Upper Crown (Grey) 16AST/16CST/16BST	1
6b	48016000	Bronze Upper Crown Assy 16BBST	1
6c	48016001	Chrome Upper Crown Assy 16CCST	1
7	45000008	Stripper Ring (Grey)	1
8	45000089	Lower Crown (Black)	1
8a	45000009	Lower Crown (Grey) 16AST/16CST/16BST	1
8b	48016005	Bronze Lower Crown Assy 16BBST	1
8c	48016006	Chrome Lower Crown Assy 16CCST	1
9	1260/8	Pawl	5
10	1260/7	Pawl Spring	5
11	45000112	Spring	3
12	45000113	Spring Cup	3
13	45000084	Drum Alloy (Black)	1
13a	45000014	Drum Alloy 16AST	1
13b	45000016	Drum Bronze 16BST/16BBST	1
13c	45000015	Drum Chrome 16CST/16CCST	1
14	15008007	Roller Bearing Assy	2
15	15000466	Drum Washer	1
16	45000018	Main Spindle	1
17	48016017	Centre Stem	1
18	45000023	Gear Spindle	1
19	45000033	Gear Spindle Sleeve	1
20	15000827	Idler Gear	1
21	15000464	Ratchet Gear	1
22	15000461	Gear Retainer	1

NOTE:

Conversion Kit for All Bronze and All Chrome winch:-
 6b + 8b = 48016022
 6c + 8c = 48016023
 6b/6c/8b/8c are assembled components NOT
 available separated.

No. 30ST



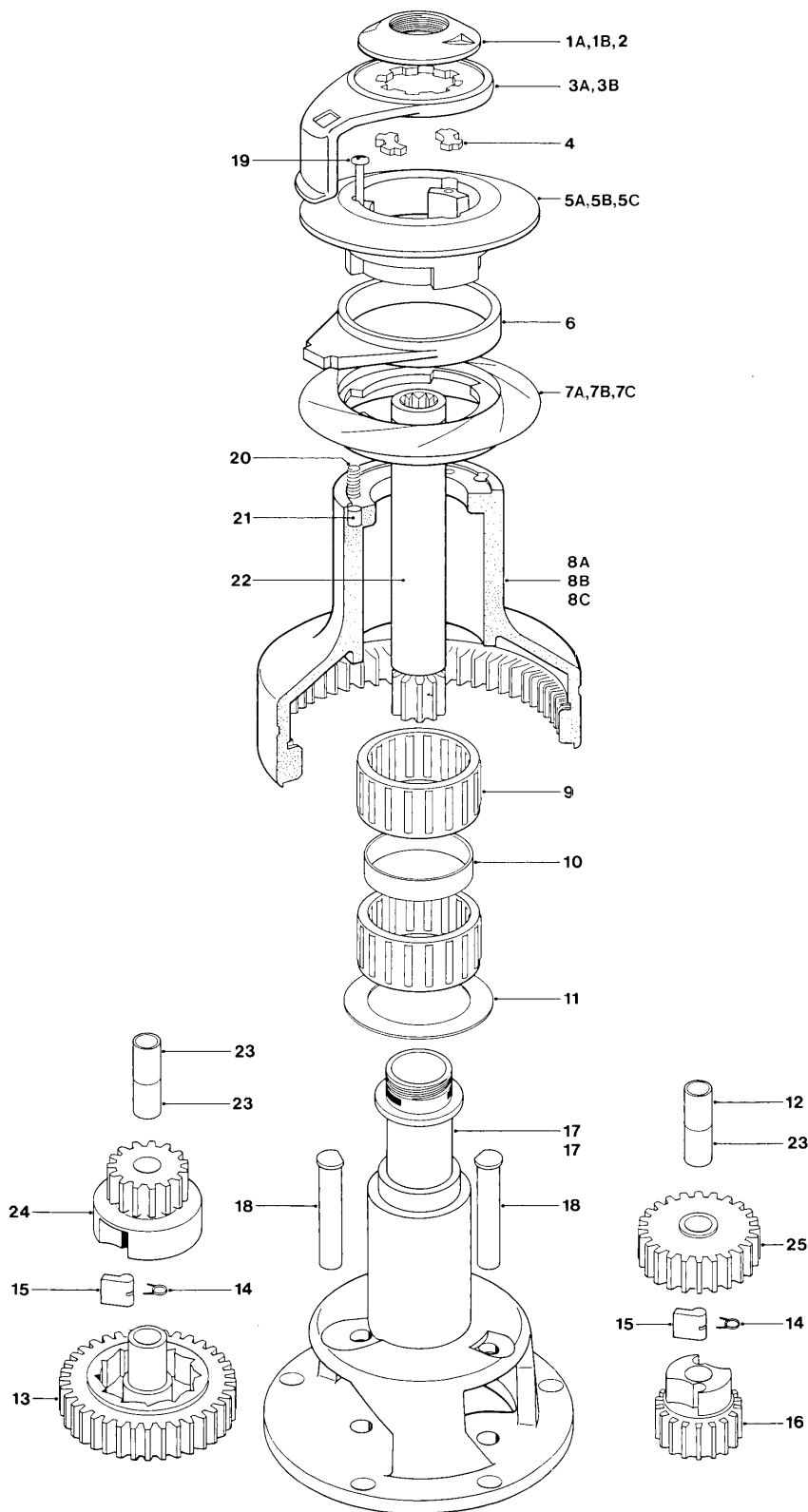
No 30 - 2 SPEED SELF TAILING WINCH

ITEM	PART No	DESCRIPTION	No Off
1a	45000100	Chrome Top Cap 30AST/30CST/30CCST	1
1b	45000101	Bronze Top Cap 30BST/30BBST	1
2	B6061	'O' Ring (Fitted In Item 1a/1b)	1
3a	45000103	Chrome Feeder Arm 30AST/30CST/30CCST	1
3b	45000104	Bronze Feeder Arm 30BST/30BBST	1
4	45000102	Collet	2
5	45000185	Upper Crown (Black) Assy	1
5a	45000105	Upper Crown (Grey) 30AST/30BST/30CST	1
5b	48030000	Bronze Upper Crown Assy 30BBST	1
5c	48030001	Chrome Upper Crown Assy 30CCST	1
6	45000108	Stripper Ring (Grey)	1
7	45000189	Lower Crown (Black) Assy	1
7a	45000109	Lower Crown (Grey) 30AST/30BBST/30CST	1
7b	48030005	Bronze Lower Crown Assy 30BBST	1
7c	48030006	Chrome Lower Crown Assy 30CCST	1
8	45000184	Alloy Drum (Black)	1
8a	45000114	Alloy Drum 30AST	1
8b	45000116	Bronze Drum 30BST/30BBST	1
8c	45000115	Chrome Drum 30CST/30CCST	1
9	15008007	Roller Bearing Assy	2
10	15000466	Drum Washer	1
11	48030017	Centre Stem	1
12	45000123	Gear Spindle	1
13	45000029	Gear Spindle Sleeve	3
14	45000119	Pawl Gear	1
15	1260/7	Pawl Spring	4
16	1260/8	Pawl	4
17	45000120	Ratchet Gear	1
18	B0326	M5x30 S/S Posidriv Pan HD Screw	3
19	45000112	Spring	6
20	45000113	Spring Cup	6
21	45000118	Main Spindle	1
22	15000378	Gear Spindle Sleeve	1
23	45000121	Pawl Gear	1
24	45000122	Ratchet Gear	1

NOTE:

Conversion Kit for All Bronze and All Chrome winch:-
 5b + 7b = 48030022
 5c + 7c = 48030023
 5b/5c/7b/7c are assembled components NOT
 available separated.

No. 40ST



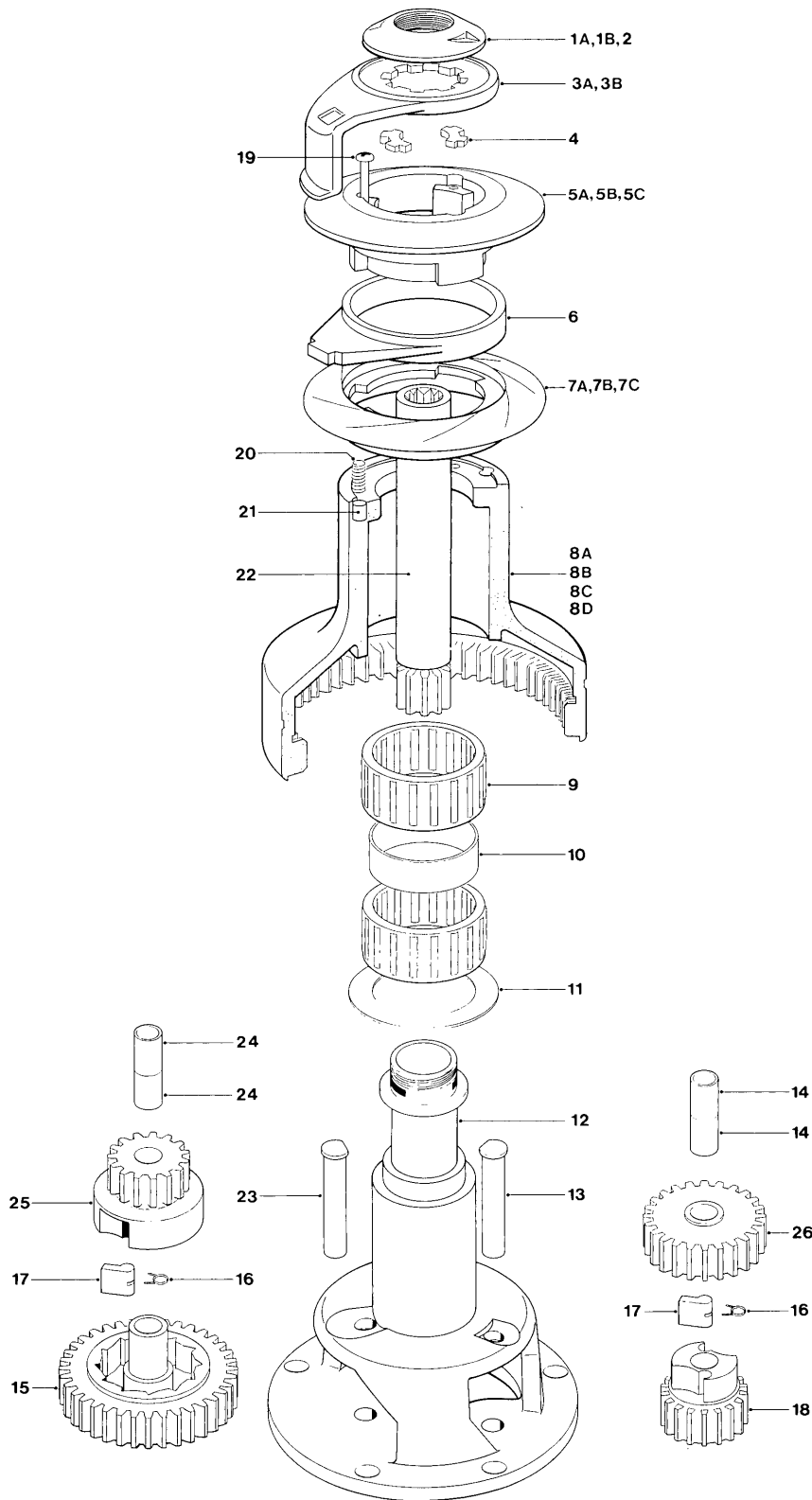
No 40 - 2 SPEED SELF TAILING WINCH

ITEM	PART No	DESCRIPTION	No Off
1a	45000100	Chrome Top Cap 40AST/40CST/40CCST	1
1b	45000101	Bronze Top Cap 40BST/40BBST	1
2	B6061	'O' Ring (Fitted In Item 1a/1b)	1
3a	45000203	Chrome Feeder Arm 40AST/40CST/40CCST	1
3b	45000204	Bronze Feeder Arm 40BST/40BBST	1
4	45000102	Collet	2
5	45000185	Upper Crown (Black)	1
5a	45000105	Upper Crown (Grey) 40AST/ 40BST/40CST	1
5b	48030000	Bronze Upper Crown Assy 40BBST	1
5c	48030001	Chrome Upper Crown Assy 40CCST	1
6	45000108	Stripper Ring (Grey)	1
7	45000189	Lower Crown (Black)	1
7a	45000109	Lower Crown (Grey) 40AST/ 40BST/40CST	1
7b	48030005	Bronze Lower Crown Assy 40BBST	1
7c	48030006	Chrome Lower Crown Assy 40CCST	1
8	45000284	Alloy Drum (Black)	1
8a	45000214	Alloy Drum 40AST	1
8b	45000216	Bronze Drum 40BST/40BBST	1
8c	45000215	Chrome Drum 40CST/40CCST	1
9	15008007	Roller Bearing Assy	2
10	15000491	Bearing Spacer	1
11	15000466	Drum Washer	1
12	15000378	Gear Spindle Sleeve	1
13	45000220	Ratchet Gear	1
14	1260/7	Pawl Spring	4
15	1260/8	Pawl	4
16	45000221	Pawl Gear	1
17	48040017	Centre Stem	1
18	45000123	Gear Spindle	2
19	B0337	M5x35 S/S Posidriv Pan HD Screw	3
20	45000112	Spring	6
21	45000113	Spring Cup	6
22	45000218	Main Spindle	1
23	45000029	Gear Spindle Sleeve	3
24	45000119	Pawl Gear	1
25	45000222	Ratchet Gear	1

NOTE:

Conversion Kit for All Bronze and All Chrome winch:-
 5b + 7b = 48030022
 5c + 7c = 48030023
 5b/5c/7b/7c are assembled components NOT
 available separated.

No. 44ST



No 44 - 2 SPEED SELF TAILING WINCH

ITEM	PART No	DESCRIPTION	No Off
1a	45000100	Chrome Top Cap 44AST/ 44CST/44CCST	1
1b	45000101	Bronze Top Cap 44BST	1
2	B6061	O' Ring (Fitted In Item 1a/1b)	1
3a	45000303	Chrome Feeder Arm 44AST/44CST/44CCST	1
3b	45000304	Bronze Feeder Arm 44BBST	1
4	45000102	Collet	2
5	45000385	Upper Crown (Black)	1
5a	45000305	Upper Crown (Grey) 44AST/44BST/44CST	1
5b	48044000	Bronze Upper Crown Assy 44BBST	1
5c	48044001	Chrome Upper Crown Assy 44CCST	1
6	45000308	Stripper Ring (Grey)	1
7	45000389	Lower Crown (Black)	1
7a	45000309	Lower Crown (Grey) 44AST/44BST/44CST	1
7b	48044005	Bronze Lower Crown Assy 44BBST	1
7c	48044006	Chrome Lower Crown Assy 44CCST	1
8	45000384	Drum Alloy (Black)	1
8a	45000314	Drum Alloy 44AST	1
8b	45000316	Drum Bronze 44BST/44BBST	1
8c	45000315	Drum Chrome 44CST/44CCST	1
8d	TBA	Drum Stainless Steel	1
9	15010007	Roller Bearing Assy	2
10	15000404	Spacer	1
11	15044116	Drum Washer	1
12	48044017	Centre Stem	1
13	45000324	Gear Spindle	1
14	15000398	Gear Spindle Sleeve	2
15	45000320	Ratchet Gear	1
16	1260/7	Pawl Spring	4
17	1260/8	Pawl	4
18	15000397	Pawl Gear	1
19	B0327	M5x40 S/S Posidriv Pan HD Screw	3
20	45000112	Spring	6
21	45000113	Spring Cup	6
22	45000318	Main Spindle	1
23	45000323	Gear Spindle	1
24	45000029	Gear Spindle Sleeve	2
25	45000319	Pawl Gear	1
26	45000322	Ratchet Gear	1

NOTE:

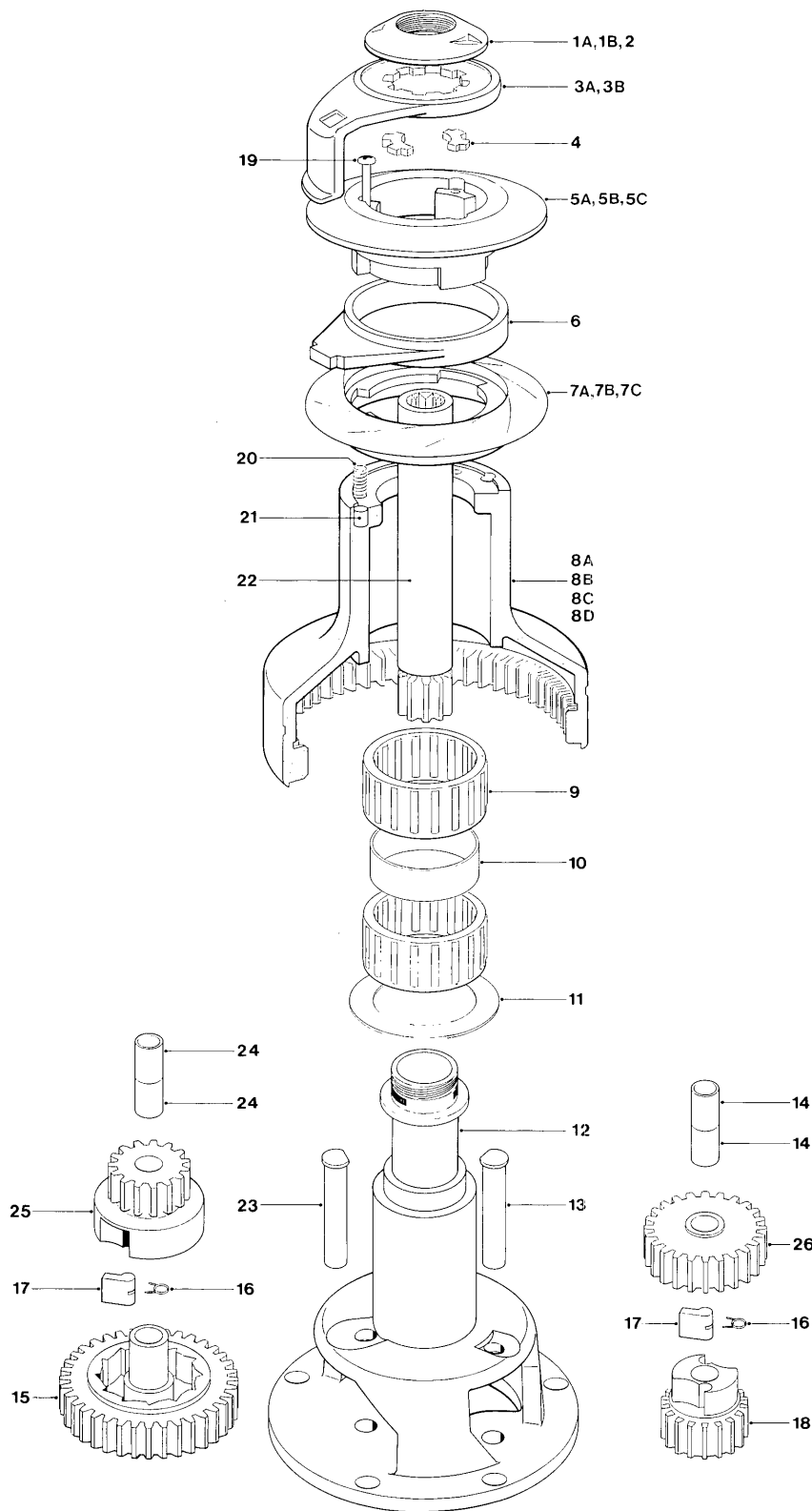
Conversion Kit for All Bronze and All Chrome winch:-

5b + 7b = 48044022

5c + 7c = 48044023

5b/5c/7b/7c are assembled components NOT
available separated.

No. 48ST



No 48 - 2 SPEED SELF TAILING WINCH

ITEM	PART No	DESCRIPTION	No Off
1a	45000100	Chrome Top Cap 48AST/48CST/48CCST	1
1b	45000101	Bronze Top Cap 48BST/48BBST	1
2	B6061	'O' Ring (Fitted In Item 1A/1B)	1
3a	45000403	Chrome Feeder Arm 48AST/48CST/48CCST	1
3b	45000404	Bronze Feeder Arm 48BST/48BBST	1
4	45000102	Collet	2
5	45000485	Upper Crown (Black)	1
5a	45000405	Upper Crown (Grey) 48AST/48BST/48CST	1
5b	48048000	Bronze Upper Crown Assy 48BBST	1
5c	48048001	Chrome Upper Crown Assy 48CCST	1
6	45000408	Stripper Ring (Grey)	1
7	45000489	Lower Crown (Black)	1
7a	45000409	Lower Crown (Grey) 48AST/48BST/48CST	1
7b	48048005	Bronze Lower Crown Assy 48BBST	1
7c	48048006	Chrome Lower Crown Assy 48CCST	1
8	45000484	Drum Alloy (Black)	1
8a	45000414	Drum Alloy 48AST	1
8b	45000416	Drum Bronze 48BST/48BBST	1
8c	45000415	Drum Chrome 48CST/48CCST	1
8d	TBA	Drum Stainless Steel	1
9	15044121	Roller Bearing Assy	2
10	15000404	Spacer	1
11	15044116	Drum Washer	1
12	48048017	Centre Stem	1
13	45000424	Gear Spindle	1
14	15000398	Gear Spindle Sleeve	2
15	45000420	Ratchet Gear	1
16	1260/7	Pawl Spring	4
17	1260/8	Pawl	4
18	15000397	Pawl Gear	1
19	B0327	M5x40 S/S Posidriv Pan HD Screw	3
20	45000112	Spring	6
21	45000113	Spring Cup	6
22	45000418	Main Spindle	1
23	45000423	Gear Spindle	1
24	45000029	Gear Spindle Sleeve	2
25	45000419	Pawl Gear	1
26	45000422	Ratchet Gear	1

NOTE:

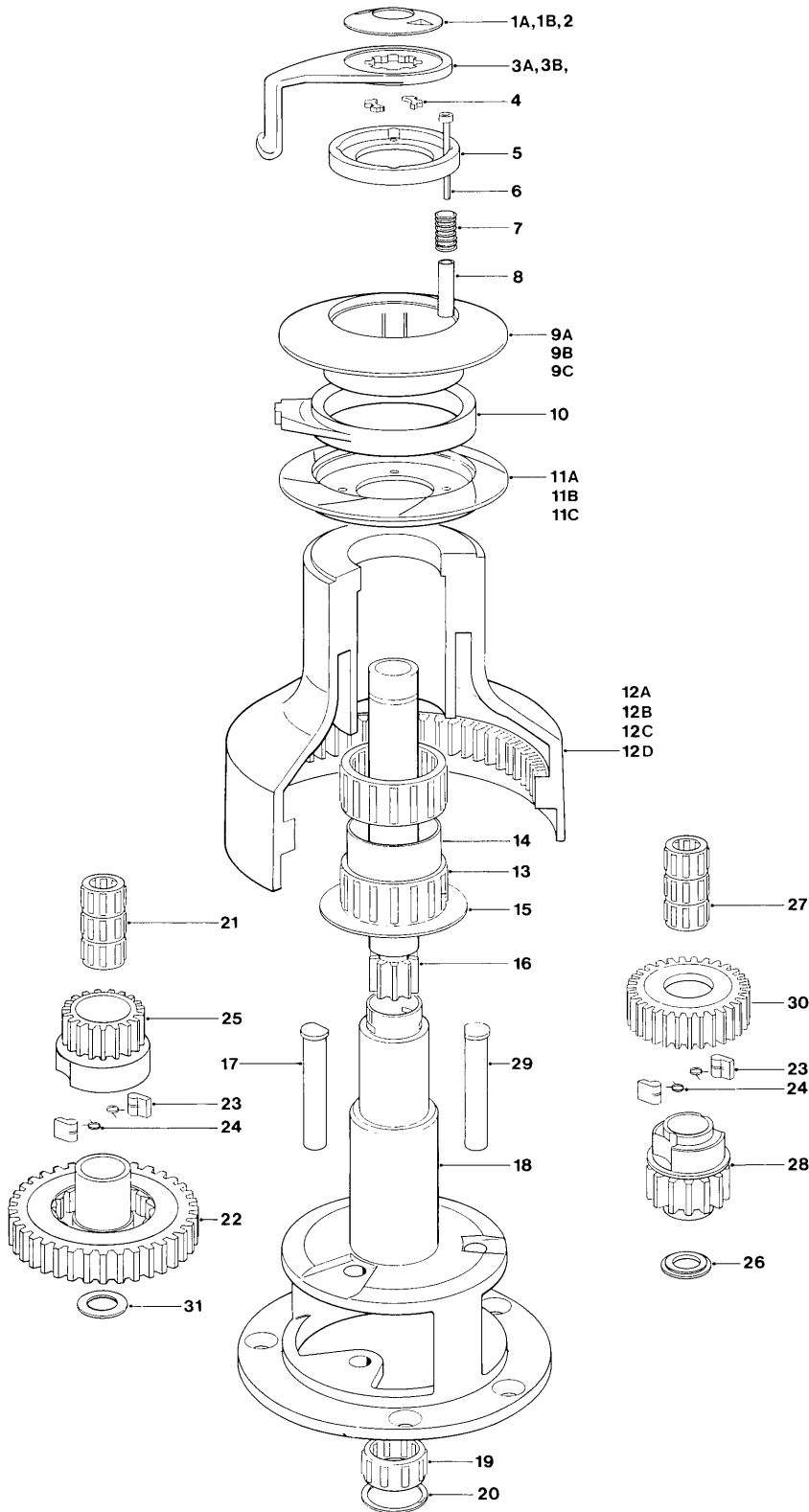
Conversion Kit for All Bronze and All Chrome winch:-

5b + 7b = 48048022

5c + 7c = 48048023

5b /5c/7b/7c are assembled components NOT available separated.

No. 50ST



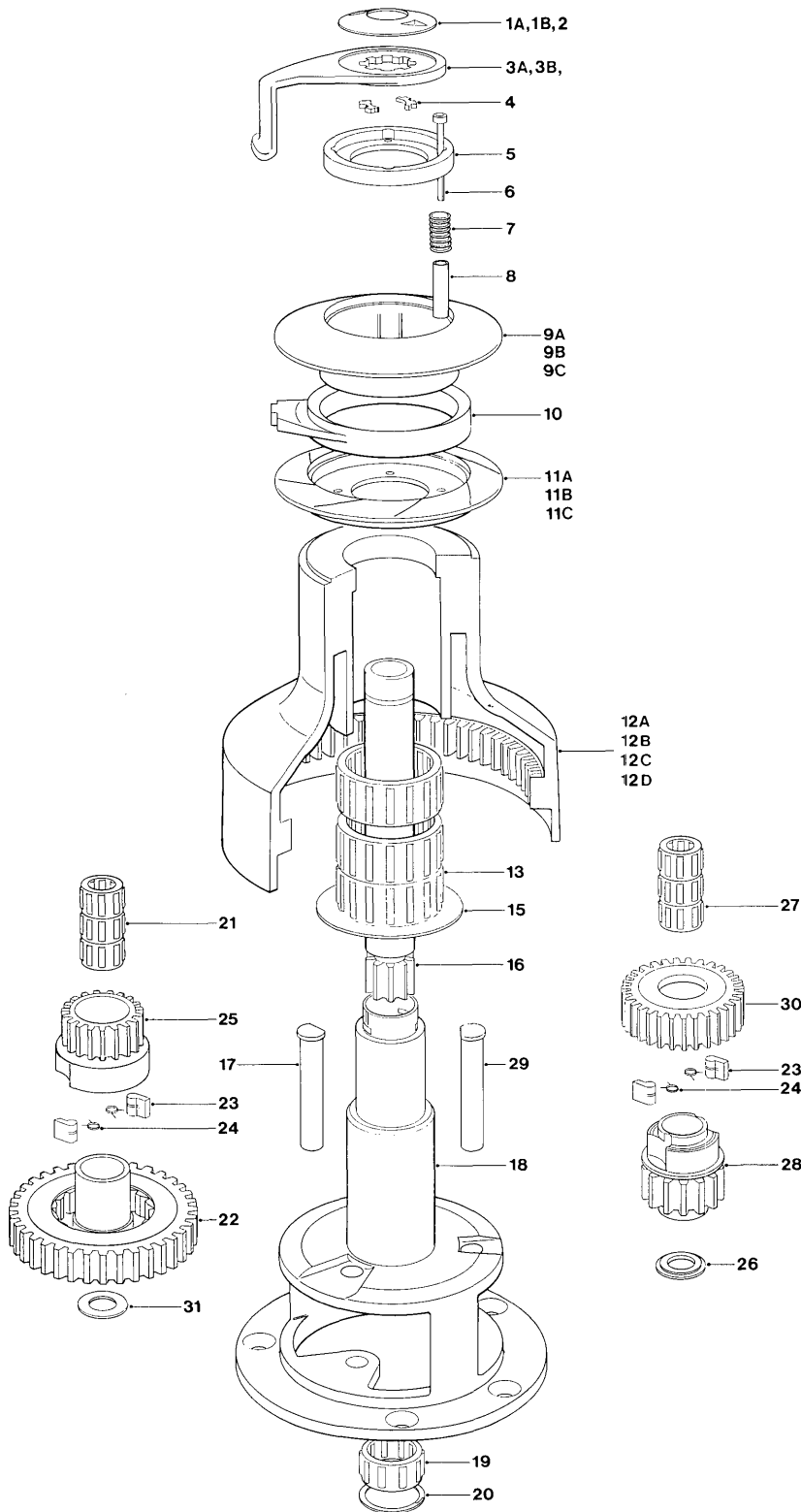
No 50 - 2 SPEED SELF TAILING WINCH

ITEM	PART No	DESCRIPTION	No Off
1a	45000100	Chrome Top Cap 50AST/50CST/50CCST	1
1b	45000101	Bronze Top Cap 50BST/50BBST	1
2	B6061	'O' Ring (Fitted In Item 1A/1B)	1
3a	45000503	Chrome Feeder Arm 50AST/50CST/50CCST	1
3b	45000504	Bronze Feeder Arm 50BST/50BBST	1
4	45000102	Collet	2
5	45000595	Spring Retainer (Black)	1
5a	45000525	Spring Retainer	1
6	B0746	M6x50 Skt Hd Cap Screw	4
7	45000512	Spring	4
8	45000513	Spacer	4
9	45000585	Upper Crown (Black)	1
9a	45000505	Upper Crown (Grey) 50AST/50BST/50CST	1
9b	48050000	Bronze Upper Crown Assy 50BBST	1
9c	48050001	Chrome Upper Crown Assy 50CCST	1
10	45000508	Stripper Ring (Grey)	1
11	45000589	Lower Crown (Black)	1
11a	45000509	Lower Crown (Grey) 50AST/50BST/50CST	1
11b	48050005	Bronze Lower Crown Assy 50BBST	1
11c	48050006	Chrome Lower Crown Assy 50CCST	1
12	45000584	Drum Alloy (Black)	1
12a	45000514	Drum Alloy 50AST	1
12b	45000516	Drum Bronze 50BST/50BBST	1
12c	45000515	Drum Chrome 0CST/50CCST	1
12d	TBA	Drum Stainless Steel 50SST	1
13	15044121	Roller Bearing Assy	2
14	15042012	Bearing Spacer	1
15	45000534	Drum Washer	1
16	45000518	Main Spindle	1
17	45000523	Gear Spindle	1
18	45000517	Centre Stem	1
19	15000019	Roller Bearing Assy (Fitted In Item 18)	1
20	B2092	Circlip (Fitted In Item 18)	1
21	1300/SA2	Roller Bearing Assy	3
22	45000520	Ratchet Gear	1
23	1264/8	Pawl	4
24	1260/7	Pawl Spring	4
25	45000519	Pawl Gear	1
26	15000646	Flanged Washer	1
27	15000017	Roller Bearing Assy	3
28	45000521	Pawl Gear	1
29	45000524	Gear Spindle	1
30	45000522	Ratchet Gear	1
31	15000981	Washer	1

NOTE:

Conversion Kit for All Bronze and All Chrome winch:-
 9b + 11b = 48050022
 9c + 11c = 48050023
 9b/9c/11b/11c are assembled components NOT available separated.

No. 54ST



No 54 - 2 SPEED SELF TAILING WINCH

ITEM	PART No	DESCRIPTION	No Off
1a	45000100	Chromed Top Cap 54AST/54CST/54CCST	1
1b	45000101	Bronze Top Cap 54BST/54BBST	1
2	B6061	'O' Ring (Fitted In Item 1A/1B)	1
3a	45000603	Chrome Feeder Arm 54AST/54CST/54CCST	1
3b	45000604	Bronze Feeder Arm 54BST/54BBST	1
4	45000102	Collet	2
5	45000595	Spring Retainer (Black)	1
5a	45000525	Spring Retainer	1
6	B0746	M6x50 Skt HD Cap Screw	4
7	45000512	Spring	4
8	45000513	Spacer	4
9	45000585	Upper Crown Assy (Black)	1
9a	45000505	Upper Crown (Grey) 54AST/54BST/54CST	1
9b	48054000	Bronze Upper Crown Assy 54BBST	1
9c	48054001	Chrome Upper Crown Assy 54CCST	1
10	45000508	Stripper Ring (Grey)	1
11	45000589	Lower Crown Assy (Black)	1
11a	45000509	Lower Crown (Grey) 54AST/ 54BST/54CST	1
11b	48054005	Bronze Lower Crown Assy 54BBST	1
11c	48054006	Chrome Lower Crown Assy 54CCST	1
12	45000684	Drum Alloy (Black)	1
12a	45000614	Drum Alloy 54AST	1
12b	45000616	Drum Bronze 54BST/54BBST	1
12c	45000615	Chrome Drum 54CST/54CCST	1
12d	TBA	Drum Stainless Steel 54SST	1
13	15044121	Roller Bearing Assy	3
15	45000534	Drum Washer	1
16	45000618	Main Spindle	1
17	45000523	Gear Spindle	1
18	45000617	Centre Stem	1
19	15000019	Roller Bearing Assy (Fitted In Item 18)	1
20	B2092	Circlip (Fitted In Item 18)	1
21	1300/SA2	Roller Bearing Assy	3
22	45000520	Ratchet Gear	1
23	1264/8	Pawl	4
24	1260/7	Pawl Spring	4
25	45000519	Pawl Gear	1
26	45000646	Flanged Washer	1
27	15000017	Roller Bearing Assy	3
28	45000621	Pawl Gear	1
29	45000624	Gear Spindle	1
30	45000522	Ratchet Gear	1
31	15000981	Washer	1

NOTE:

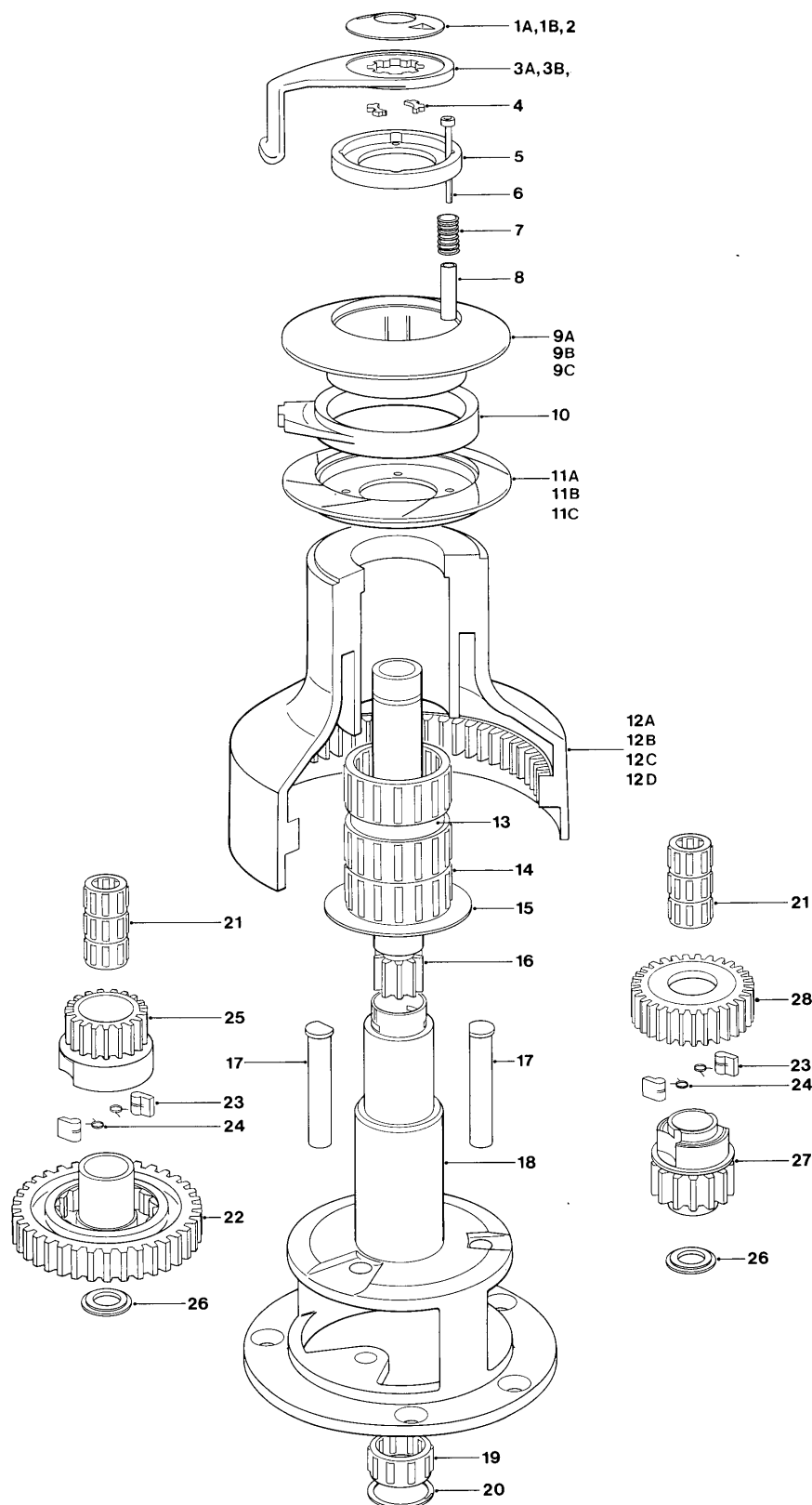
Conversion Kit for All Bronze and All Chrome winch:-

9b + 11b = 48050022

9c + 11c = 48050023

9b/9c/11b/11c are assembled components **NOT** available separated.

No. 58ST



No 58 - 2 SPEED SELF TAILING WINCH

ITEM	PART No	DESCRIPTION	No Off
1a	45000700	Chromed Top Cap 58AST/58CST/58CCST	1
1b	45000701	Bronze Top Cap 58BST/58BBST	1
2	B6061	'O' Ring (Fitted In Item 1A/1B)	1
3a	45000703	Chrome Feeder Arm 58AST/58CST/58CCST	1
3b	45000704	Bronze Feeder Arm 58BST/ 58BBST	1
4	45000102	Collet	2
5	45000595	Spring Retainer (Black)	1
5a	45000795	Spring Retainer	1
6	B0756	M6x55 Skt HD Cap Screw	4
7	45000512	Spring	4
8	45000713	Spacer	4
9	45000785	Upper Crown (Black)	1
9a	45000705	Upper Crown (Grey) 58AST/58BST/58CST	1
9b	48058000	Bronze Upper Crown Assy 58BBST	1
9c	48058001	Chrome Upper Crown Assy 58CCST	1
10	45000708	Stripper Ring (Grey)	1
11	45000789	Lower Crown (Black)	1
11a	45000709	Lower Crown (Grey) 58AST/58BST/58CST	1
11b	48058005	Bronze Lower Crown Assy 58BBST	1
11c	48058006	Chrome Lower Crown Assy 58CCST	1
12	45000784	Drum Alloy (Black)	1
12a	45000714	Drum Alloy 58AST	1
12b	45000716	Drum Bronze 58BST/58BBST	1
12c	45000715	Drum Chrome 58CST/58CCST	1
12d	TBA	Drum Stainless Steel	1
13	15065115	Spacer	1
14	15044121	Roller Bearing Assy	3
15	45000534	Drum Washer	1
16	45000718	Main Spindle	1
17	45000624	Gear Spindle	2
18	45000717	Centre Stem	1
19	15000019	Roller Bearing Assy (Fitted In Item 18)	1
20	B2092	Circlip (Fitted In Item 18)	1
21	15000017	Roller Bearing Assy	6
22	45000720	Ratchet Gear	1
23	1264/8	Pawl	4
24	1260/7	Pawl	4
25	45000719	Pawl Gear	1
26	15000646	Flanged Washer	2
27	45000721	Pawl Gear	1
28	45000722	Ratchet Gear	1

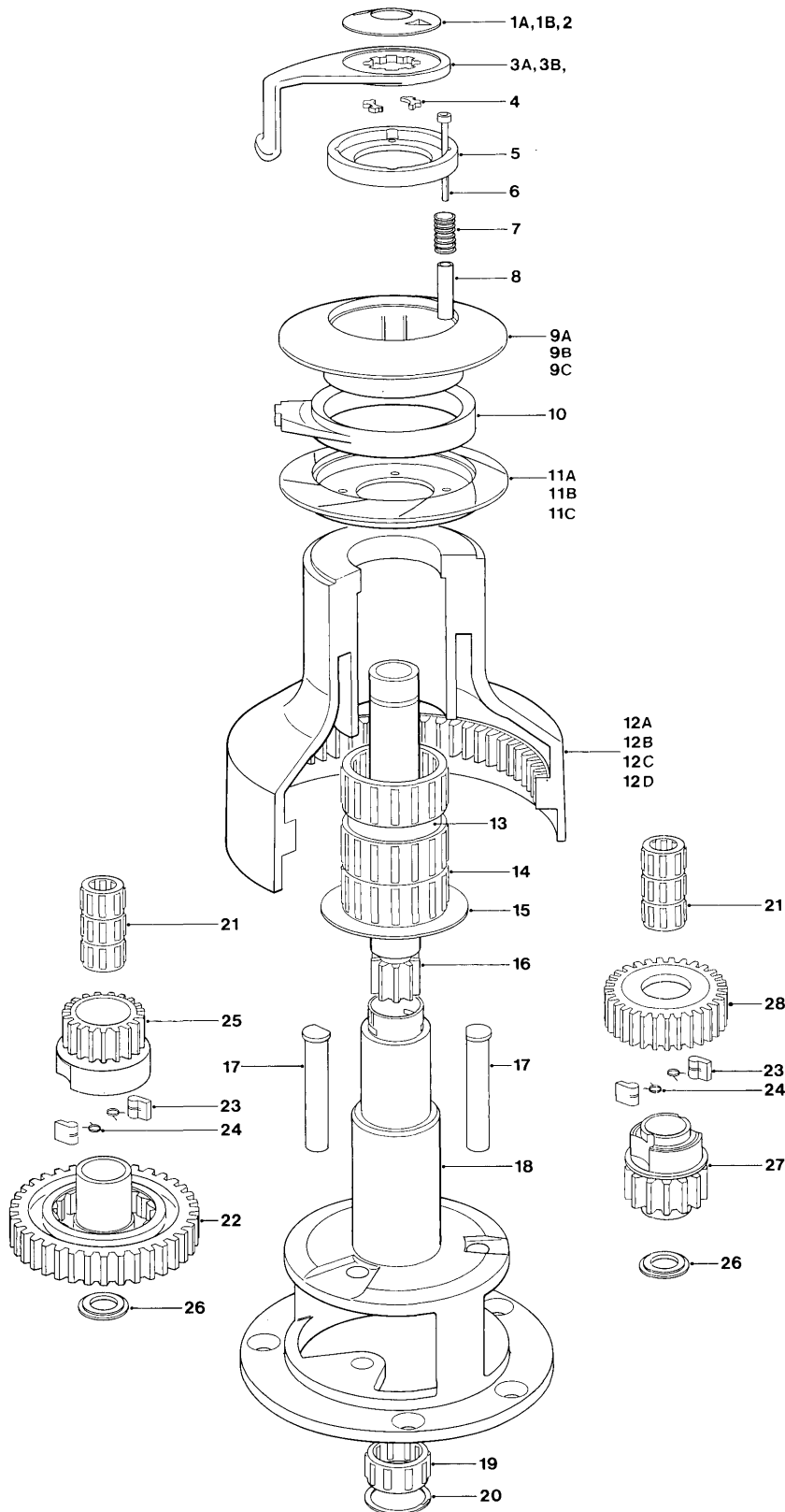
NOTE:

Conversion Kit for All Bronze and All Chrome winch:-
9b + 11b = 48058022

9c + 11c = 48058023

9b/9c/11b/11c are assembled components NOT
available separated.

No. 62ST



No 62 - 2 SPEED SELF TAILING WINCH

ITEM	PART No	DESCRIPTION	No Off
1a	45000700	Chrome Top Cap 62AST/62CST/62CCST	1
1b	45000701	Bronze Top Cap 62BST/ 62BBST	1
2	B6061	'O' Ring (Fitted In Item 1A/1B)	1
3a	45000803	Chrome Feeder Arm 62AST/62CST/62CCST	1
3b	45000804	Bronze Feeder Arm 62BST/ 62BBST	1
4	45000102	Collet	2
5	45000795	Spring Retainer (Black)	1
5a	45000725	Spring Retainer	1
6	B0756	M6x55 Skt Hd Cap Screw	4
7	45000512	Spring	4
8	45000713	Spacer	4
9	45000785	Upper Crown (Black)	1
9a	45000705	Upper Crown (Grey) 62AST/ 62BST/62CST	1
9b	48062000	Bronze Upper Crown Assy 62BBST	1
9c	48062001	Chrome Upper Crown Assy 62CCST	1
10	45000708	Stripper Ring (Grey)	1
11	45000789	Lower Crown (Black)	1
11a	45000709	Lower Crown (Grey) 62AST/ 62BST/62CST	1
11b	48062005	Bronze Lower Crown Assy 62BBST	1
11c	48062006	Chrome Lower Crown Assy 62CCST	1
12	45000884	Drum Alloy (Black)	1
12a	45000814	Drum Alloy 62AST	1
12b	45000816	Drum Bronze 62BST/62BBST	1
12c	45000815	Drum Chrome 62CST/62CCST	1
12d	TBA	Drum Stainless Steel	1
13	15000404	Spacer	1
14	15044121	Roller Bearing Assy	3
15	45000534	Drum Washer	1
16	45000818	Main Spindle	1
17	45000624	Gear Spindle	2
18	45000817	Centre Stem	1
19	15000019	Roller Bearing Assy (Fitted In Item 18)	1
20	B2092	Circlip (Fitted In Item 18)	1
21	15000017	Roller Bearing Assy	6
22	45000720	Ratchet Gear	1
23	1264/8	Pawl	4
24	1260/7	Pawl Spring	4
25	45000719	Pawl Gear	1
26	15000646	Flanged Washer	2
27	45000821	Pawl Gear	1
28	45000722	Ratchet Gear	1

NOTE:

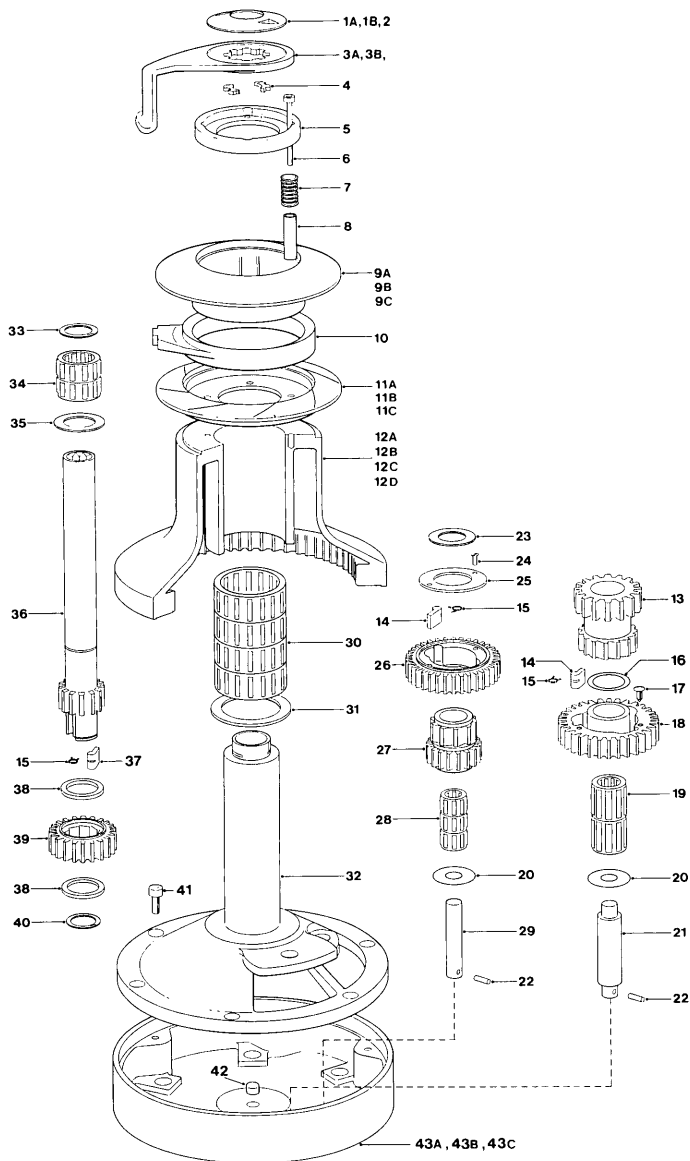
Conversion Kit for All Bronze and All Chrome winch:-

9b + 11b = 48058022

9c + 11c = 48058023

9b/9c/11b/11c are assembled components **NOT** available separated.

No. 66ST



No 66 - 2 SPEED SELF TAILING WINCH

ITEM	PART No	DESCRIPTION	No Off
1a	45000700	Chrome Top Cap 66AST/66CST/66CCST	1
1b	45000701	Bronze Top Cap 66BST/66BBST	1
2	B6061	'O' Ring (Fitted In Item 1a/1b)	1
3a	45000903	Chrome Feeder Arm 66AST/66CST/66CCST	1
3b	45000904	Bronze Feeder Arm 66BST/66BBST	1
4	45000102	Collet	2
5	45000995	Spring Retainer (Black)	1
5a	45000925	Spring Retainer	1
6	B0841	M6x65 S/S Skt Hd Cap Screw	5
7	45000912	Spring	5
8	45000913	Spacer	5
9	45000985	Upper Crown (Black)	1
9a	45000905	Upper Crown (Grey) 66AST/66BST/66CST	1
9b	48066000	Bronze Upper Crown Assy 66BBST	1
9c	48066001	Chrome Upper Crown Assy 66CCST	1
10	45000908	Stripper Ring (Grey)	1
11	45000989	Lower Crown (Black)	1
11a	45000909	Lower Crown (Grey) 66AST/66BST/66CST	1
11b	48066005	Bronze Lower Crown Assy 66BBST	1
11c	48066006	Chrome Lower Crown Assy 66CCST	1
12	45000984	Drum Alloy (Black)	1
12a	45000914	Drum Alloy 66AST	1
12b	45000916	Drum Bronze 66BST/66BBST	1
12c	45000915	Drum Chrome 66CST/66CCST	1
12d	TBA	Drum Stainless Steel 66SST	1
13	45000920	Ratchet Gear	1
14	1264/8	Pawl	5
15	1260/7	Pawl Spring	7
16	45000965	Washer	1
17	B2233	Fir Tree Retainer	3
18	45000919	Pawl Gear	1
19	15000018	Roller Bearing Assy	2
20	15000247	Washer	2
21	15000239	Gear Spindle	1
22	B1501	3/16" x 3/4" Spirol Pin	2
23	15000719	Washer	1
24	B0543	M5x12 S/S Csk Hd Posidriv Screw	2
25	15000023	Retainer	1
26	45000922	Pawl Gear	1
27	45000921	Ratchet Gear	1
28	15000017	Roller Bearing Assy	3
29	15001587	Gear Spindle	1
30	15044121	Roller Bearing Assy	4
31	15000287	Drum Washer	1
32	45000917	Centre Stem	1
33	B2086	Circlip	1
34	15000019	Roller Bearing Assy	2
35	15000024	Washer	1
36	45000918	Main Spindle	1
37	1260/8	Pawl	2
38	15000303	Spacer	2
39	45000926	Ratchet Gear	1
40	B2075	Circlip	1
41	B0691	M10x20 S/S Skt Hd Cap Screw	6
42	15000723	Buffer	1
43a	45000930	Base (Grey) 66AST/66CST	1
43b	45000931	Base (Chrome) 66CCST	1
43c	45000932	Base (Bronze) 66BST/66BBST	1

NOTE:

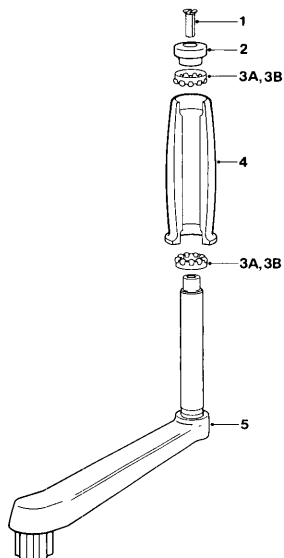
Conversion Kit for All Bronze and All Chrome winch:-

9b + 11b = 48066022

9c + 11c = 48066023

9b/9c/11b/11c are assembled components **NOT** available separated.

Nos. 1010/1120



8" Alloy Plain Handle 10" Chrome Plain Handle

Cat No 2914 1010
Cat No 2914 1120

Item	Part No	Part No	Description	No Off
1	B4276	B4276	10-24 UNC CSKHD Posidriv Screw	1
2	15100005G	15100005G	Spindle Cap	1
3a	B1653	B1653	3/16" S/S Ball	18
3b	15100004	15100004	Ball Bearing Cage	2
4	15100006G	15100006G	Handle Turn	1
5	18100011G	18100004	Handle Sub Assy	1

8" Alloy Lock In Handle 10" Chrome Lock In Handle

Cat No 2914 1011
Cat No 2914 1121

Item	Part No	Part No	Description	No Off
1	B4276	B4276	10-24 UNC CSK HD Posidriv Screw	1
2	15100005G	15100005G	Spindle Cap	1
3a	B1653	B1653	3/16" S/S Ball	18
3b	15100004	15100004	Ball Bearing Cage	2
4	15100006G	15100006G	Handle Turn	1
5	18100012	18100005	Handle Sub Assy	1
6	B1505	B1505	Spirol Pin	1
7a	15900022G	15900022G	Lock Lever	1
7b	18100007G	18100007G	Lock Lever Sub Assy	1
8	15100013	15100013	Lock Spring	1
9	15100030	15100019	Sleeve	1
10a	18100010	18100001	Lock In Sub Assy	1
10b	15100012	15100012	Lock In Plate	1
10c	15100011	15100011	Lock In Spindle	1

10" Chrome Double Grip Lock In Handle

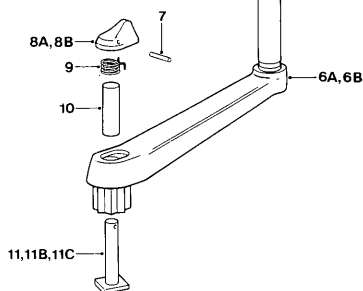
Cat No 2914 1122

Item	Part No	Description	No Off
1	B4276	10-24 UNC CSK HD Posidriv Screw	1
2	15100005G	Spindle Cap	1
3a	B1653	3/16" S/S Ball	18
3b	15100004	Ball Bearing Cage	2
4	15100006G	Handle Turn	1
5	15100016	Bush	1
6a	15100023	Handle Arm	1
6b	15100015	Handle Spindle	1
7	B1505	Spirol Pin	1
8a	15900022G	Lock Lever	1
8b	18100007G	Lock Lever Sub Assy	1
9	15100013	Lock Spring	1
10	15100019	Sleeve	1
11a	18100001	Lock In Sub Assy	1
11b	15100012	Lock In Plate	1
11c	15100011	Lock In Spindle	1

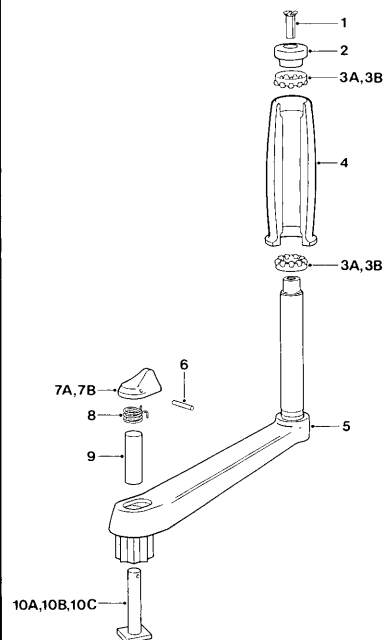
10" Chrome Ratchet Handle

Cat No 2914 1370

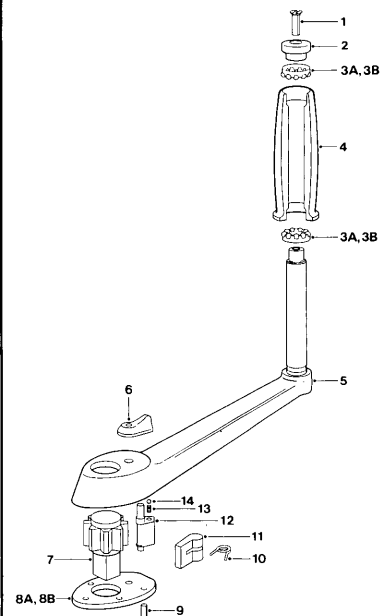
Item	Part No	Description	No Off
1	B4276	10-24 UNC CSK HD Posidriv Screw	1
2	15100005G	Spindle Cap	1
3a	B1653	3/16" S/S Ball	18
3b	15100004	Ball Bearing Cage	2
4	15100006G	Handle Turn	1
5	18100006	Handle Sub Assy	1
6	15137202	Change Lever	1
7	1370/4	S/S Spindle	1
8a	1249/2	Retaining Plate	1
8b	1249/10	Stud	1
9	B0502	CSK HD Screw 2BA x 1/2" Long	1
10	1249/7	Pawl Spring	2
11	1249/5	Pawl	2
12	1249/6	Change	1
13	15137204	Spring	1
14	B1650	5/32" S/S Ball	1



Nos. 1011/1121



No. 1370



Owners Servicing Log

Yacht (type)

(Name)

Model

Model

Primary (Genoa) Sheet Winches

Secondary (Spinnaker) Sheet Winches

Main Halyard Winch

Genoa/Jib Halyard Winch

Spinnaker Halyard Winch

Staysail Halyard Winch

Topping Lift Winch

Reef Winch

Auxiliary Winch

Mainsheet Winch

Winch

Winch

Winch

Winch

Winch

Winch

Servicing Record

Winch

Notes/Observations/Parts Used

Basic Service

Full Service

Date

Date

Catalogues Available Include:

Catalogues, Service Manuals and the useful Winch "How To" Booklet.

If you would like to receive your copy direct or more information on other Lewmar products contact your nearest Lewmar distributor.

Lewmar Marine Equipment Catalogue

Service Manual Volume 6

Service Manual Volume 7

Service Manual Volume 6 Specials

"How To Service Your Ocean Winch" Booklet
(available in French, German, Spanish, Swedish
and English)

LEWMAR®

LEWMAR LIMITED WARRANTY

1. WARRANTY

Lewmar warrants its products in normal usage to be free of defects in materials and workmanship for a period of three years from date of purchase by the original purchaser, subject to the conditions, limitations and exceptions listed below. Any part which proves to be defective in normal usage during that three year period will be repaired or replaced by Lewmar.

A. CONDITIONS AND LIMITATIONS

- i Lewmar's liability shall be limited to repair or replacement of the goods or parts defective in materials or workmanship.
- ii Determination of the suitability of the material for the use contemplated by the buyer is the sole responsibility of the buyer and Lewmar shall have no responsibility in connection with such suitability.
- iii **LEWMAR SHALL NOT BE LIABLE IN ANY WAY FOR:**
 - a. Failures due to use of products in applications for which they are not intended.
 - b. Failures due to corrosion, ultra violet degradation, wear and tear or improper installation.
 - c. Failures due to incorrect maintenance.
 - d. Failures due to conditions that exceed the product's performance specifications.
- iv Product subject to warranty claim must be returned to Lewmar for examination unless otherwise agreed by Lewmar in writing.
- v Lewmar shall not be responsible for shipping charges or installation labour associated with any warranty claim.
- vi Service by anyone other than authorised Lewmar representatives shall void this warranty unless it accords with Lewmar guideline's and standards of workmanship.

B. EXCEPTIONS

Warranty is limited to one year in the case of the following:

- Bow thrusters
- Electric motors and electrical equipment
- Electronic controls
- Hydraulic pumps, valves and actuators
- Weather seals
- Products used in "Grand Prix" racing applications

- 2. There are no warranties of merchantability fitness for purpose, or any other kind, express or implied, and none shall be implied by law. The duration of any such warranties that are nonetheless implied by law for the benefit of a consumer shall be limited to a period of one year from original purchase by the user. Some countries do not allow limitations on how long an implied warranty lasts, so the above may not apply to you.
- 3. Lewmar shall not be liable for consequential damages to yachts, equipment or other property or persons due to any failure of Lewmar equipment. Some countries do not allow the exclusion or limitation of incidental or consequential damages, so the above limitation exclusion may not apply to you.
- 4. This warranty gives you specific legal rights, and you may also have other legal rights which vary from country to country.

Lewmar Marine Ltd. reserve the right to alter design and specification without prior notice.

- * This warranty covers all products depicted in Lewmar's catalogues from 1992 and purchased after July 1st 1992.

Publication Code B2195

LEWMAR MARINE LIMITED

Southmoor Lane, Havant, Hampshire, PO9 1JJ, England
Tel: (+44) 01705 471841 Fax: (+44) 01705 476043

Lewmar Marine Sud Europe SARL

Avenue Marillac, La Ville en Bois,
17000 La Rochelle, France
Tel: (+33) 46 50 50 46 Fax: (+33) 46 50 59 04

Lewmar Sud Europe Cannes

Allée Charles Nungesser, Parc d'Activité de la Siagne
06210 Mandelieu, France
Tel: (+33) 93 48 80 48 Fax: (+33) 93 90 24 61

Lewmar Sud Europe Barcelona

Joan de Borbó 92, 08039 Barcelona, Spain
Tel: (+34) 3 221 94 37 Fax: (+34) 3 225 19 49

Lewmar Mid Europe BV

Branderweg 19, 8042 PD Zwolle, Holland
Tel: (+31) 38 214668 Fax: (+31) 38 215642

Lewmar Marine

New Whitfield Street, Guilford, CT 06437, USA
Tel: (+1) 203 458 6200 / 800 362 7212
Fax: (+1) 203 453 5669

Lewmar Marine

13080 Belcher Road South,
Suite D, Largo, FL 34643, USA
Tel: (+1) 813 539 0000 Fax: (+1) 813 538 9190

Lewmar Marine

2312 Susan Street, Santa Ana,
CA 92704, USA
Tel: (+1) 714 557 9103 Fax: (+1) 714 432 5323

Lewmar Marin AB

Argongatan 8, S-431 53 Mölndal, Sweden
Tel: (+46) 31 277130 Fax: (+46) 31 273116

LEWMAR®