



SeaStar Mounting Kit # HA5478-4

SeaStar helm—round bezel back mount



NOTICE!

This back mount kit is for use with HH52XX-4 and HH57XX-4 helm models only. Contact Dometic for other back mounting options.

1. Prior to drilling any holes, confirm that once installed the helm pump and/or steering wheel will not interfere with any other functional equipment equipment, such as shift/throttle levers, gauges, switches, etc. Check behind the dashboard for complete clearance before drilling.
2. Tape template (page 3) to the dashboard, drill holes as required.
3. Assemble the mounting bezel (item 1) with the carriage bolts (item 2) and the rubber seal (item 3) according to the diagram.
4. Secure the assembly to the mounting surface using the washers (item 4) and the nuts (item 5).

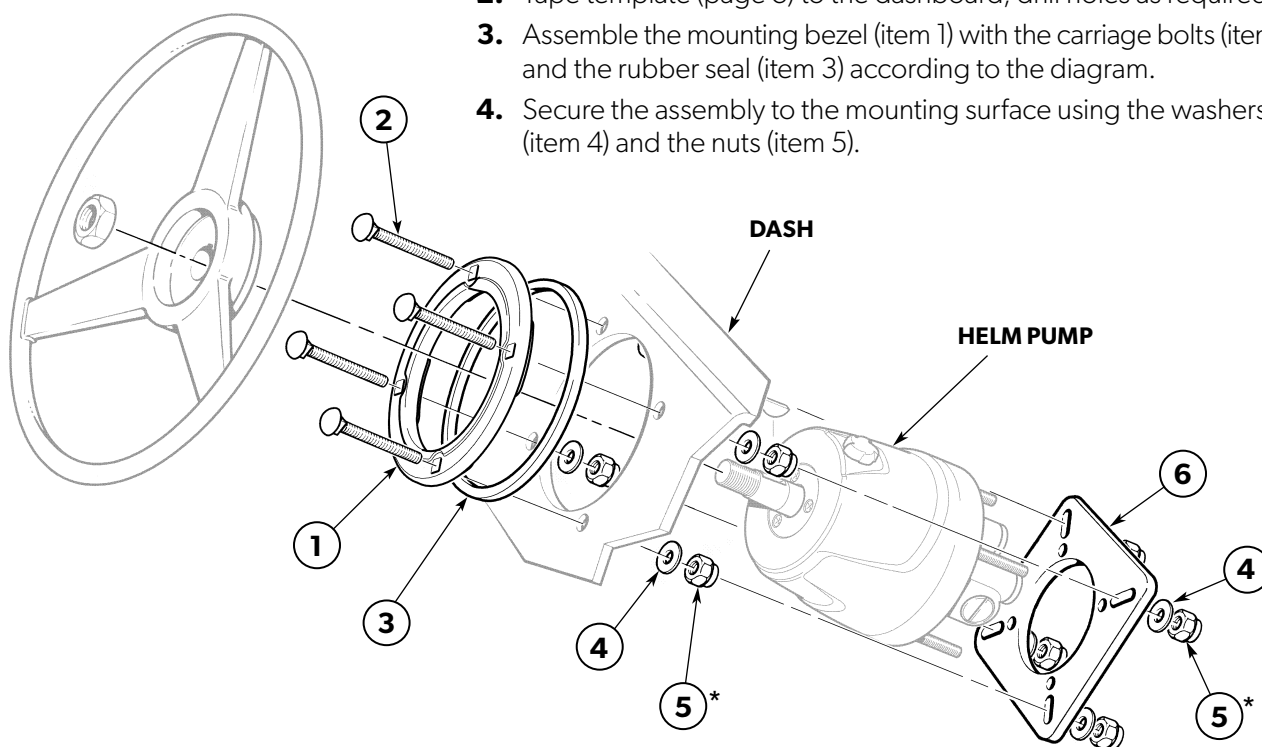


Figure 1.

Item	Part#	Qty.	Description
1	766995	1	Mounting bezel
2	185624	4	Carriage bolts, 1/4" x 3-1/2"
3	766723	1	Rubber seal
4	067528	8	Washer, 1/4" flat

Item	Part#	Qty.	Description
*5	067424	8	Locking nut, 1/4" NC (Refer to notice above.)
6	764233	1	Anchor plate

**WARNING!**

Do not attempt to install this helm without first reading the installation instructions. If instructions are missing, contact Dometic for a new copy. Failing to comply may result in loss of steering causing property damage and/or personal injury.

5. With the bezel casting part number aligned with the fill port plug (see arrow, figure 2), assemble the mounting bezel (item 1) with the carriage bolts (item 2), washers (item 4), and locking nuts (item 5) according to the figure 1 on page 1.
6. Insert the helm pump from behind the dash and through the hole. Secure using the anchor plate (item 6) and the remaining four nuts (item 5).

**NOTICE!**

*Item 5: Torque to 75in-lb (8.67Nm)

**REAR SIDE OF
MOUNTING
BEZEL**

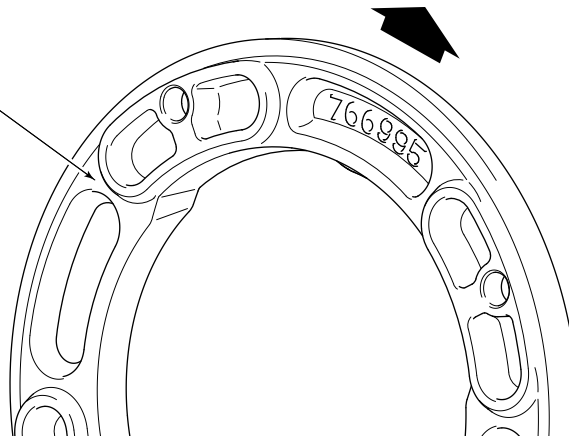


Figure 2.



Mounting template

**NOTICE!**

If this template has been downloaded electronically or copied from another document, please verify all template dimensions prior to cutting. Print/copy reproductions may be scaled differently.

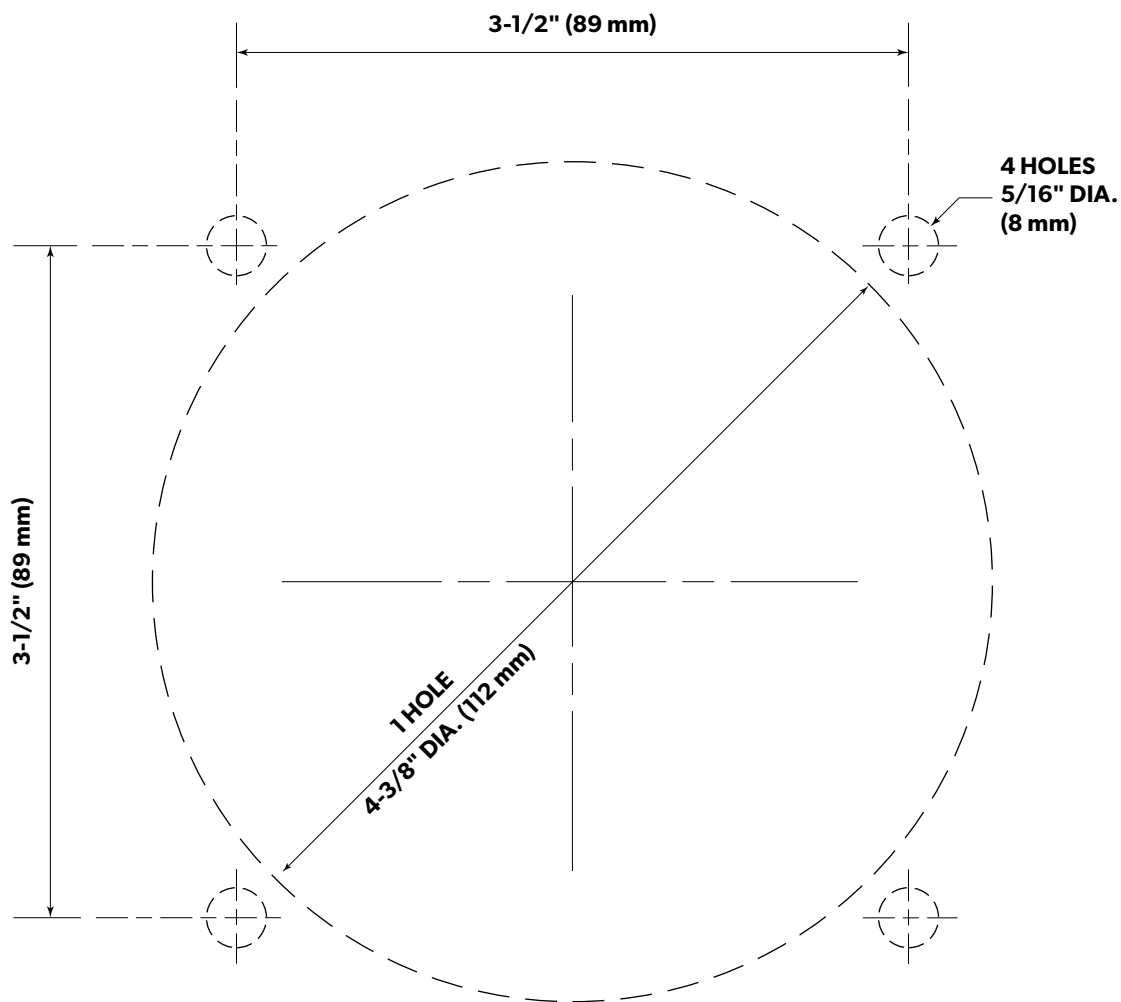


Figure 3. Mounting template.