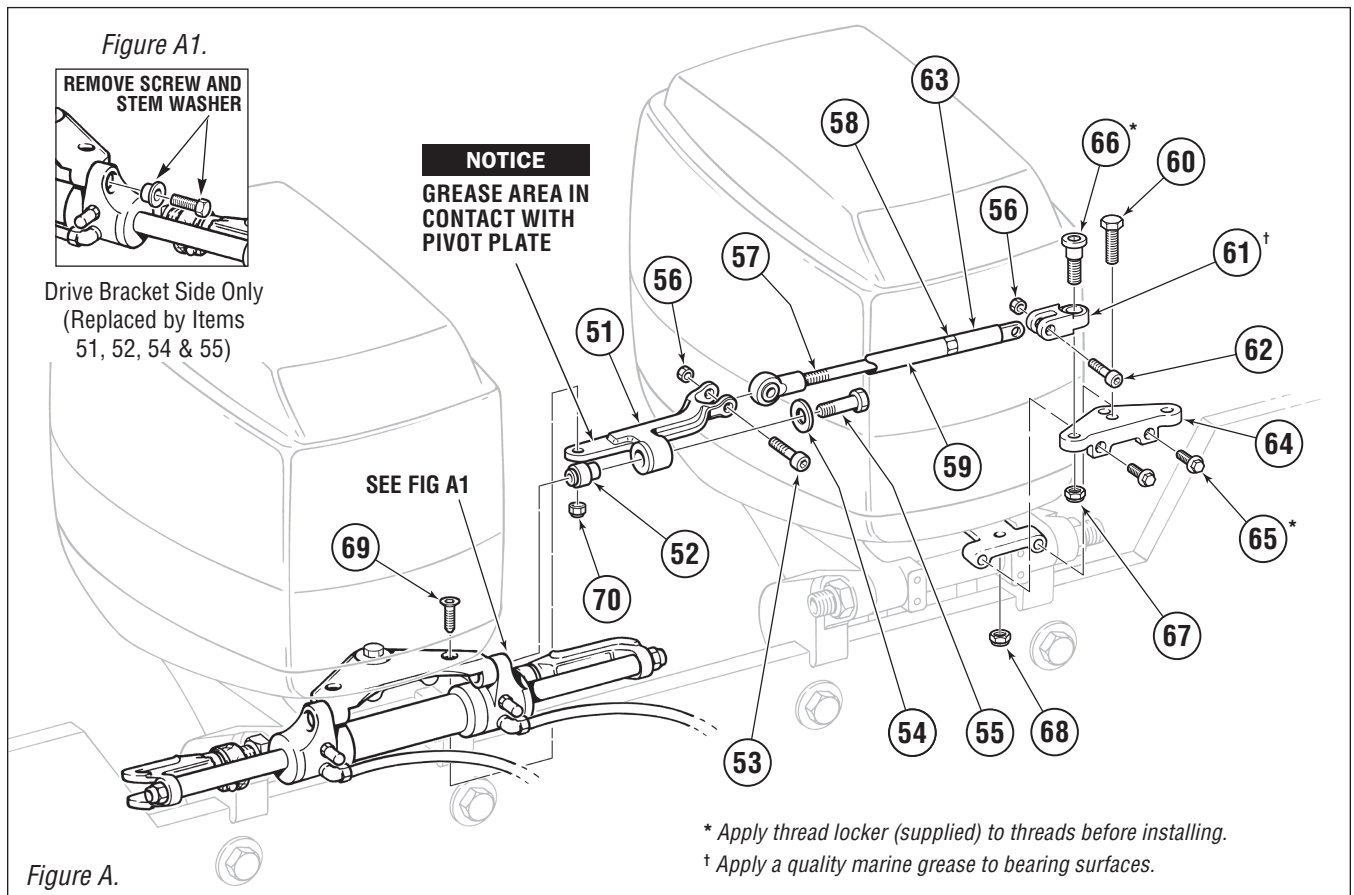




## TIE BAR KIT # HO6001EM

ENGINE MANUFACTURER	YEAR	MODEL	CYLINDER	TIE BAR KIT	NOTE
<b>MERCURY/MARINER</b>	2002 TO DATE	150 HP FourStroke and SeaPro	HC5345	HO6001EM	May be suitable in additional Mercury applications. Consult factory.
	2018 TO DATE	200–250 HP SeaPro 175–250 HP FourStroke	HC5345 HC5345	HO6001EM HO6001EM	Tournament Series Tiebar recommended for aggressive use
	2018 TO DATE	300 HP SeaPro (CMS) 300 HP FourStroke	HC5345 HC5345	HO6001EM HO6001EM	Counter-rotating engines only. Tournament Series tiebar recommended for non-counter-rotating applications or for aggressive use.



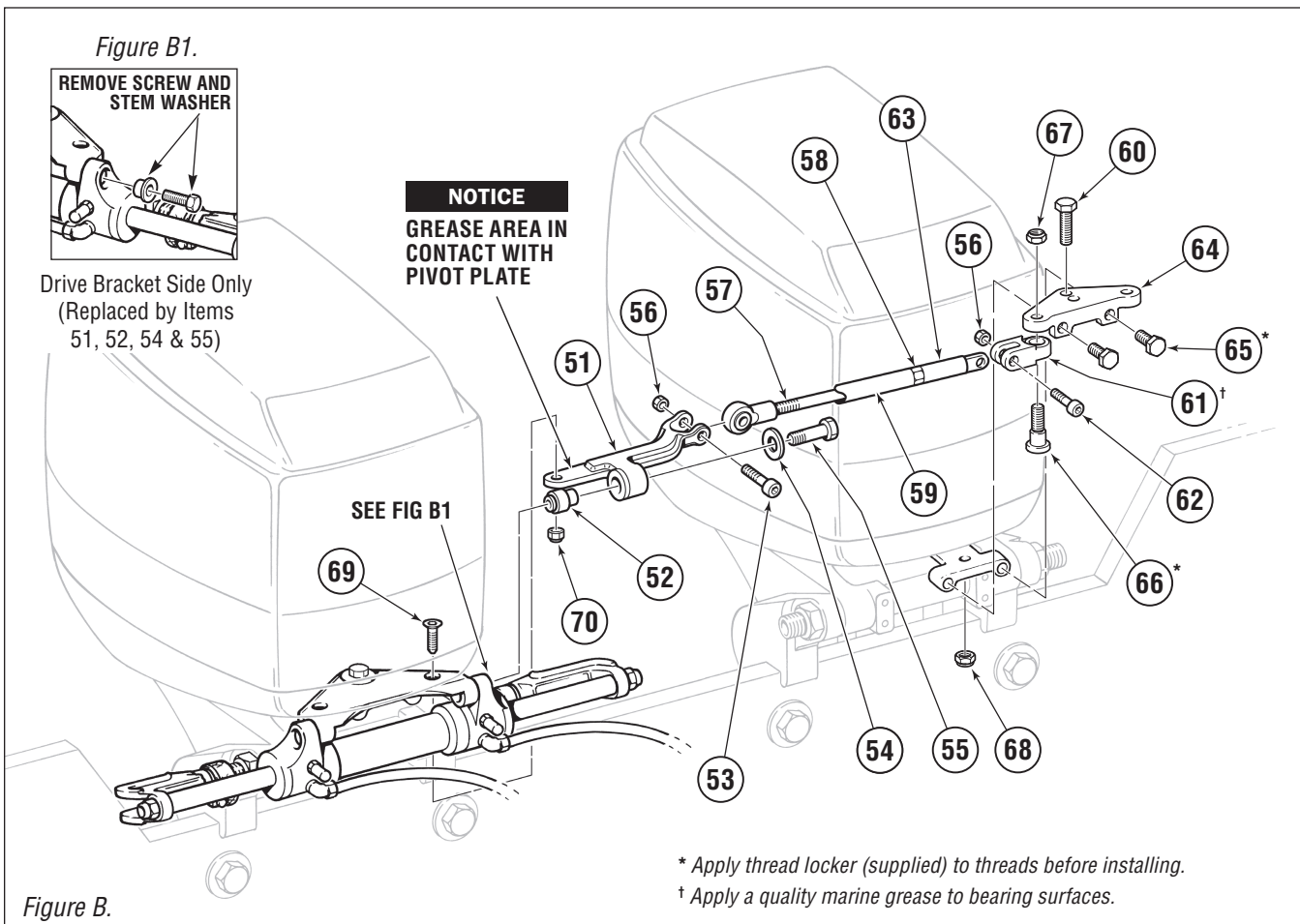
ITEM	QTY	DESCRIPTION
51	1	Drive Bracket Assembly
52	1	Spacer
53	1	Shoulder Bolt, 3/8" x 1-1/4", SS
54	1	Washer 5/16" x 3/4" OD SS
55	1	HHCS 5/16" NC x 2" SS
56	2	Nut, Nylok®, 5/16" NC SS
57	1	Tie Bar c/w Ball Joint
58	1	Nut, Nylok® 1/2" NF, NI PL BR
59	1	Stringer Tube, SS
60	1	HHCS, 3/8" NF x 1", SS

ITEM	QTY	DESCRIPTION
61	1	Clevis Assembly
62	1	Shoulder Bolt, 3/8" x 1" SS
63	1	Rod End SS 1/2" NF
64	1	End Mount Bracket
65	2	Flange Bolt, 5/16" NF x 1", SS
66	1	Shoulder Bolt, 9/16" x 1/2", SS
67	1	Nut, 7/16-20 Nylok®, SS
68	1	Nut, 3/8" NF, Thin, PTFE Coated
69	1	FHCS, 5/16" NC x 3/4", SS
70	1	Nut, Nylok®, 5/16" NC, Thin, SS



## TIE BAR KIT # H06001EMH

ENGINE MANUFACTURER	YEAR	MODEL	CYLINDER	TIE BAR KITS	NOTE
<b>HONDA</b>	1996-TO DATE	BF75 HP – BF115 HP	HC5345	H06001EMH	



ITEM	QTY	DESCRIPTION
51	1	Drive Bracket Assembly
52	1	Spacer
53	1	Shoulder Bolt, 3/8" x 1-1/4", SS
54	1	Washer 5/16" x 3/4" OD SS
55	1	HHCS 5/16" NC x 2" SS
56	2	Nut, Nylok®, 5/16" NC SS
57	1	Tie Bar c/w Ball Joint
58	1	Nut, Nylok® 1/2" NF, NI PL BR
59	1	Stringer Tube, SS
60	1	HHCS, 3/8" NF x 1", SS

ITEM	QTY	DESCRIPTION
61	1	Clevis Assembly
62	1	Shoulder Bolt, 3/8" x 1" SS
63	1	Rod End SS 1/2" NF
64	1	End Mount Bracket
65	2	HHCS, M10 x 1.25 x 25, SS
66	1	Shoulder Bolt, 9/16" x 1/2", SS
67	1	Nut, 7/16-20 Nylok®, SS
68	1	Nut, 3/8" NF, Thin, PTFE Coated
69	1	FHCS, 5/16" NC x 3/4", SS
70	1	Nut, Nylok®, 5/16" NC, Thin, SS