

THE DRAWING AND ALL THE INFORMATION PROVIDED ARE PROPERTY OF LEWMAR AND NOT BE REPRODUCED, TRANSMITTED OR MODED WITHOUT PERMISSION. COPYRIGHT LEWMAR LTD.

GENERAL NOTES:-

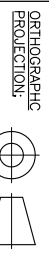
- 1. ALL DIMENSIONS IN BRACKETS () ARE FOR REFERENCE ONLY; ALL DIMENSIONS ARE IN MM UNLESS STATED OTHERWISE
- 2. GENERAL TOLERANCE OF ±0.2mm UNLESS STATED OTHERWISE
- 3. REMOVE ALL BURRS AND SHARP EDGES
- 4. GENERAL TOLERANCE OF +0.1/-0.0 FOR DRILL HOLES UNLESS STATED OTHERWISE
- 5. ALL ANGULAR DIMENSIONS TO BE ±0.5° UNLESS OTHERWISE SPECIFIED

PRODUCTION NOTES:-

DATE	ISS	CHANGE	BY
CHANGED	DESC.	ILLUSTRATION	YL
02/06/09	A		

MATERIAL:-

BROUGHT IN ITEM



SCALE:- 1:1 @ A3

DRAWN:- YAT L

DATE:- 02/06/2009

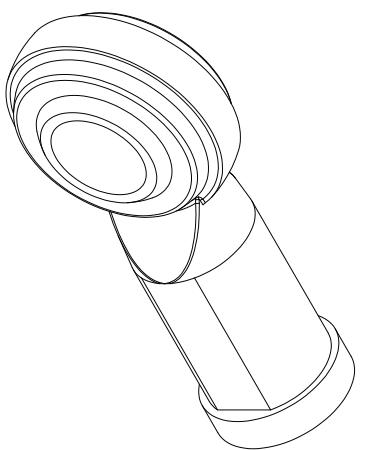
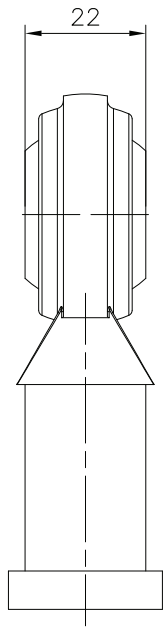
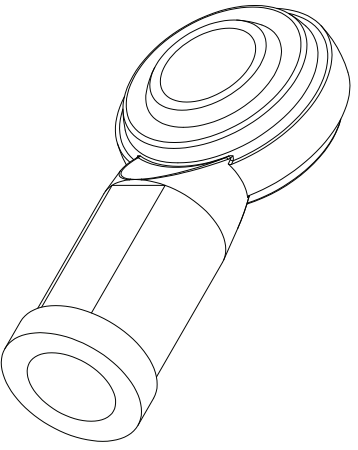
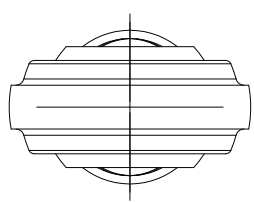
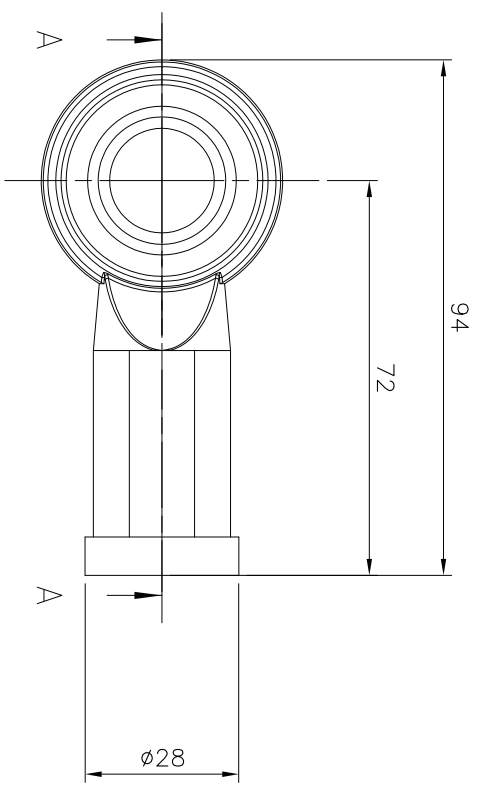
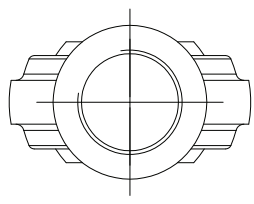
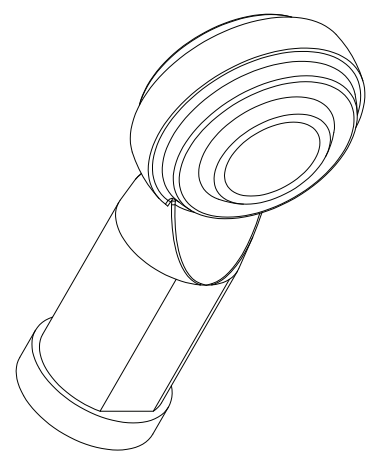
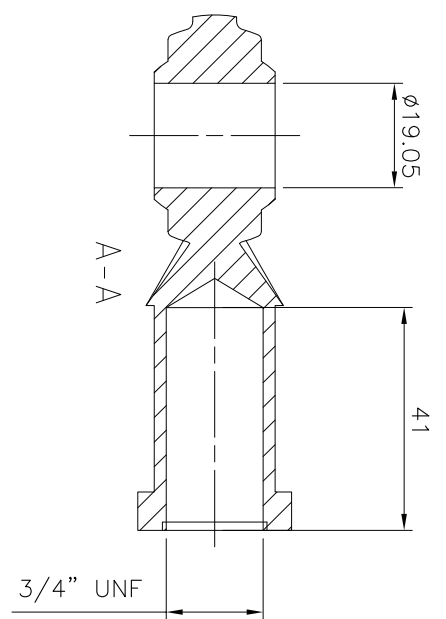
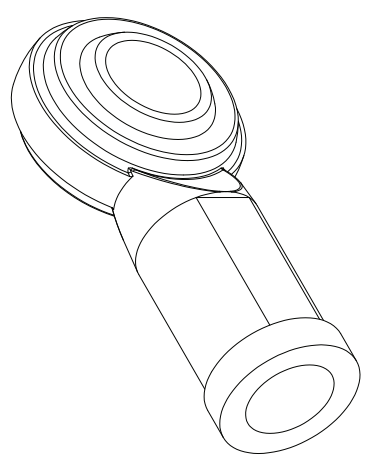
SHEET:- 1 OF 1

CHECK'D:-

LEWMAR
LEWMAR STEERING DIVISION

TEL: +44(0) 23 82 47144 FAX: +44(0) 23 82 45730
HANTSFIELD, PO2 1UL, UK
www.lewmarsystems.com

DWG NO: 82000357 ISSUE: A



TITLE:-

ROD END AHFT12