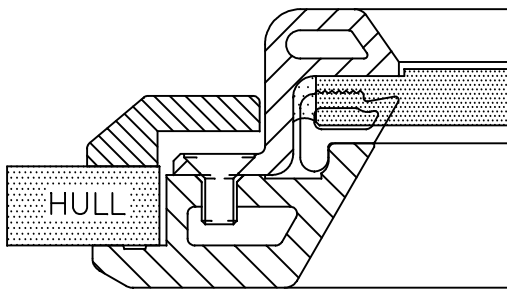
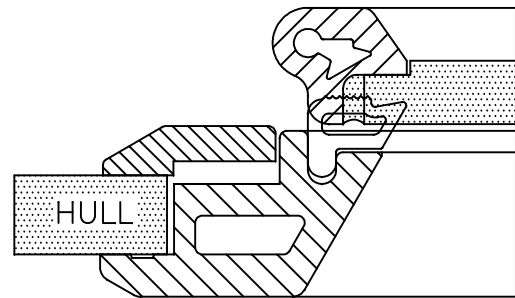


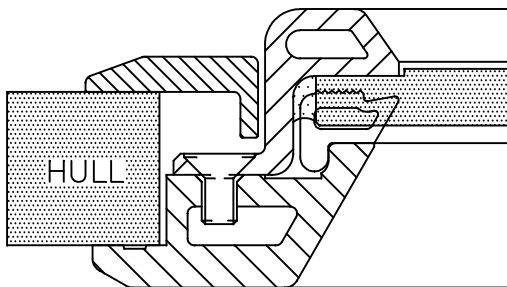
# ATLANTIC PORTLIGHT & FIXEDLIGHT VALANCES & HULL THICKNESS



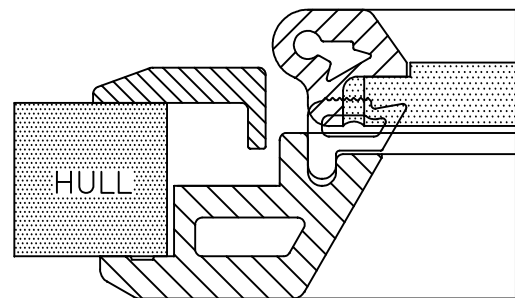
FIXEDLIGHT WITH THIN HULL (AL)  
VALANCE, HULL THICKNESS  
8 TO 24mm



PORTLIGHT WITH THIN HULL (AF)  
VALANCE, HULL THICKNESS  
8 TO 15mm



FIXEDLIGHT WITH THICK HULL (AV)  
VALANCE, HULL THICKNESS  
20 TO 35mm



PORTLIGHT WITH THICK HULL (AV)  
VALANCE, HULL THICKNESS  
16 TO 24mm NB. OPENING MAY  
RESTRICTED ON THICKER HULLS