

ITEM	QTY	PART NO	DESCRIPTION
1	1	89400122	ENGUARD TOP PLATE
2	1	89400033	GUARDRAIL-KICKBACK
3	1	89400166	CONNECTING BUSH
4	1	89400317	DROP TUBE FULL
5	2	82001251	CUP PLASTIC (BECKSON)

SPECIFIC NOTES:-

1. ISO METRIC THREADS TO BS3643 6H/6g
2. UNIFIED THREADS TO BS1580 CLASS 2A/2B
3. WOODRUFF KEY SLOTS TO BS4235 PART 2
4. CIRCLIP GROOVES TO BS3673 PART4

PRODUCTION NOTES:-

- n1.
- n2.
- n3.
- n4.

COPYRIGHT:-

THE DRAWING AND ALL THE INFORMATION PROVIDED ARE PROPERTY OF LEWMAR LTD AND CANNOT BE REPRODUCED, TRANSFERRED OR MODIFIED WITHOUT PERMISSION. COPYRIGHT LEWMAR LTD.

GENERAL NOTES:-

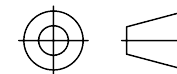
1. ALL DIMENSIONS IN MM UNLESS STATED OTHERWISE
2. GENERAL TOLERANCE OF $\pm 0.2\text{mm}$ UNLESS STATED OTHERWISE
3. REMOVE ALL BURRS AND SHARP EDGES
4. GENERAL TOLERANCE OF $+0.1/-0.0$ FOR DRILL HOLES UNLESS STATED OTHERWISE
5. ALL ANGULAR DIMENSIONS TO BE $\pm 0.5^\circ$ UNLESS OTHERWISE SPECIFIED
6. M4 BOLTS TO BE TIGHTENED TO $2.5\text{Nm} \pm 0.5\text{Nm}$
7. M5 BOLTS TO BE TIGHTENED TO $5.0\text{Nm} \pm 1.0\text{Nm}$
8. M6 BOLTS TO BE TIGHTENED TO $9.0\text{Nm} \pm 1.0\text{Nm}$
9. M8 BOLTS TO BE TIGHTENED TO $21.0\text{Nm} \pm 2.0\text{Nm}$
10. M10 BOLTS TO BE TIGHTENED TO $43.0\text{Nm} \pm 3.0\text{Nm}$

DATE CHANGED	ISS	CHANGE DESC.	BY
21/09/05	B	DWG CORR'N	CJ
16/12/05	C	DWG UPDATE	KO

MATERIAL:-

- X
- X
- X

PROJECTION:-



SCALE:- 1:1 @ A3

DRAWN:- C.JARMAN

DATE:- 21/09/2005

SHEET:- 1 OF 1

CHECK'D:-

TITLE:-

G/RAIL KIT EG K/BACK FULL

LEWMAR
 LEWMAR STEERING DIVISION
 UNIT 1, BLOCK B, PORTERWAY, LAPORTE WAY,
 LUTON, BEDFORDSHIRE, UK, LU2 8EP
 TEL: +44(0) 1525 804400 FAX: +44(0) 1525 800331
 EMAIL: DESIGN@HYDROSTEERING.COM

DWG NO:-	REV
89400300	C