



080 Size Utility Pump - AC Flexible Impeller MPU

02/01

53080 Series

Bronze Flexible Impeller Utility Pump

Features

- Self prime from dry up to 3 metres
- Flows up to 80 litres per minute
- Pressure up to 2 bar
- Handles hard or soft solids
- Tolerates abrasive wear
- Non pulsating flow
- Handles viscosities up to 500 centiPoise
- Uses standard IEC motor
- Dry running capability for 30 minutes, post operation



Typical Applications

- Sump emptying and cellar drainage
- Sewage tank emptying
- Product transfer
- Mains boosting
- Shallow well pumping
- Water sampling
- Washdown systems
- Silo pump-out on farms
- Dockside pump-out of toilets

Specifications

Seal : Carbon/Ceramic mechanical seal, Nitrile elastomers

Pump Head : Bronze with integral fluid reservoir to protect pump against dry running for up to 30 minutes, post operational

End Cover : Brass


Bearings : Uses motor bearings

Shaft : Stainless steel, shaft extension

Ports : 1½" BSP internal thread

Cable : Fitted with 2m long supply cable

Weight : 15kg.

 Pump rated to 40 minutes continuous duty at 1.5 bar differential pressure with water at 20°C ambient temperature

Model Options


Impeller Option				Neoprene	Nitrile
Temperature Range				4°C to 80°C	-5°C to 90°C
Volts	Amps	Hertz	RPM		
230	4	50	1450	53080-2001	53080-2003
					53080-2063 (Marine Use*)
Pump Head Only				53081-2001	53081-2003


*Uses a modified Cam without port fingers

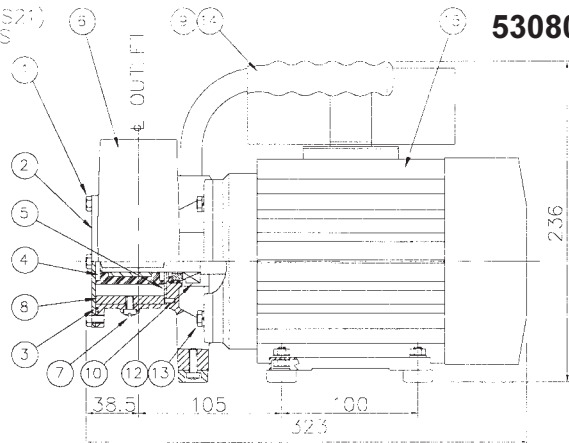
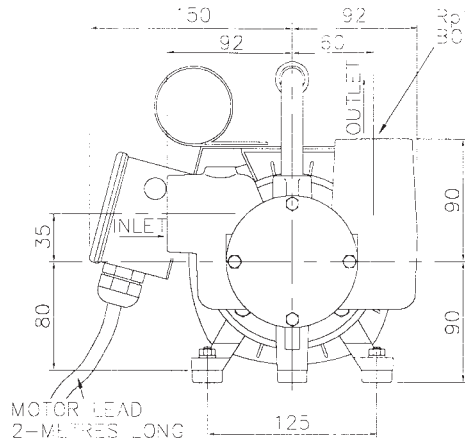
All motors are 4 pole, single phase, 550 Watt, AC. Enclosure IP55. Fitted with manual reset overload.

Note: it is recommended to start the pump at extreme ends of the temperature range, impeller damage may occur

For Installation, Operating, Maintenance and Safety Instructions refer to form 43001-0543

 **WARNING** Explosion hazard. Do not pump gasoline, solvents, thinners or other flammable liquids. To do so can cause an explosion resulting in injury or death.

 **WARNING** Fire hazard. Wiring must comply with applicable electrical standards and include a properly sized fuse or circuit breaker. Improper wiring can cause a fire resulting in injury or death



53080 Series

Dimensions in mm

Parts List

Key	Description	Qty	Part No.	
1	Screw*	4	X3001-176F	
2	Endcover	1	53085-0000	
3	O-Ring*	1	See Below	
4	Impeller*	1	See Below	
5	Wearplate	1	4156	
6	Body	1	53084-2000	
7	Screw	Cam	1	X3004-174F
		Standard	1	53082-0000
		Marine	1	53082-0060
8	Cam	1	53083-0000	
9	Handle	1	53083-0000	
10	Seal assembly*	1	22626-6000	
12	Screw	Body	4	X3001-180C
13	Washers		1	X3081-091C
14	Handle grip		1	X5255-005
15	Motor	230V/50Hz	1	SP8012-0243

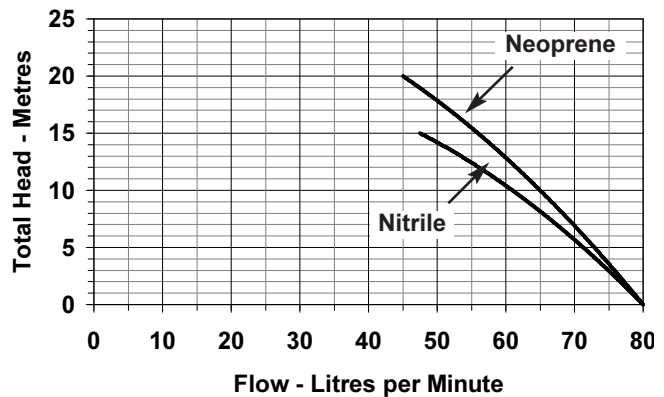
Alternative compounds, spare parts & service kit numbers

Key	Description	Neoprene	EPDM	Nitrile	Viton®
3	O-ring	X4020-269A	X4020-269A	X4020-269A	X4020-269B
4	Impeller	14282-0001	8981-0002	14282-0003	14282-0004
	Service kit	SK411-0001		SK411-0003	N/A

Service kit contains parts marked * above

Models with a Neoprene or an EPDM Impeller, use Nitrile Lip Seal and O-rings

Performance



Note : Performance shown is for a new pump, pumping water at 20°C, performance may vary by up to 15%. Consult factory for performance of alternative impeller compounds.

Viton is a registered trademark of DuPont Dow Elastomers

Jabsco



ITT Industries

USA

Jabsco
1485 Dale Way
Costa Mesa
CA 92628-2158

Tel : +1 714 545 8251
Fax : +1 714 957 0609

UK

Jabsco
Bingley Road
Hoddesdon
Hertfordshire, EN11 0BU

Tel : +44 (0) 1992 450 145
Fax : +44 (0) 1992 467 132

GERMANY

Jabsco GmbH
Oststraße 28
22844 Norderstedt

Tel : +49 (0) 40 53 53 73 0
Fax : +49 (0) 40 53 53 73 11