



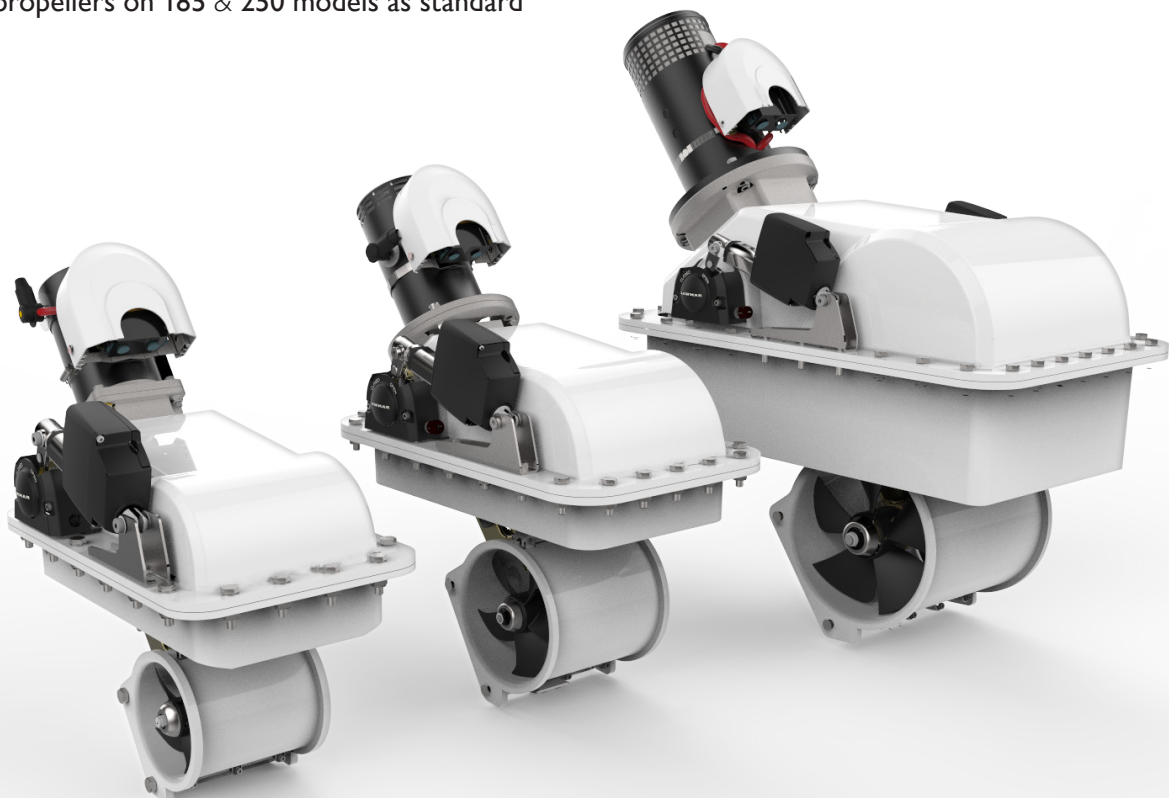
LEWMAR®

Lewmar Retractable Thrusters

New Lewmar Retractable Thruster Range

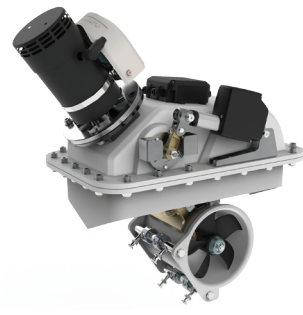
Lewmar is launching a new range of retractable thrusters developed from top to bottom with a fresh approach. Particular care and attention to the detail of the installation process was taken into consideration whilst retaining the tried and tested components from the Lewmar TT thruster range. Lewmar thrusters achieve even thrust in both directions for maximum control and manoeuvrability. All Lewmar thrusters have been extensively tested, resulting in a smooth, efficient and quiet operation.

- The unique 'low pivot' mechanism minimises internal space requirements yet permits maximum tunnel immersion
- Flange mounting as standard for easy installation. The universal flange can be adjusted to any given hull shape and the captive nut allows effortless fastening from the top of the unit only.
- Robust GRP construction
- 140, 185 and 250mm tunnel diameters available
- Auto-retract function 5 minutes after use
- Dual propellers on 185 & 250 models as standard

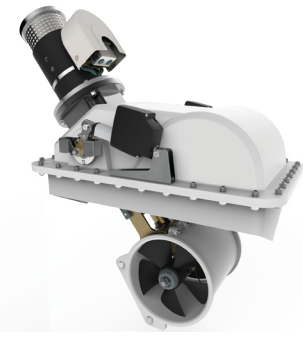




- 140 Retractable Thruster**
- 2.0kw - 2.2kw Motor
 - 12v options available
 - Electric
 - IP Available



- 185 Retractable Thruster**
- 4.0kw - 6.0kw Motor sizes
 - 12 or 24v options available
 - Electric or Hydraulic
 - IP Available on Electric



- 250 Retractable Thruster**
- 8.0kw Motor size
 - 24v Electric or Hydraulic
 - Dual Actuators
 - Dual Hub

| PART NUMBER | 59111001 | 59111002 | 59111003 | 59111004 | 59112004 | 59112005 | 59112006 | 59112007 | 59112008 | 59112009 | 59112010 | 59112011 | 59112012 | 59112013 | 59112014 | 59112019 | 59112020 | 59112021 | 59112022 | 59112023 | 59112024 | 59112025 | 59112026 | 59112027 | 59113001 | 59113002 | 59113003 | 59113004 |
|-------------|----------|----------|----------|----------|----------|----------|----------|----------|----------|----------|----------|----------|----------|----------|----------|----------|----------|----------|----------|----------|----------|----------|----------|----------|----------|----------|----------|----------|
| TUNNEL SIZE | 140 | 140 | 140 | 140 | 185 | 185 | 185 | 185 | 185 | 185 | 185 | 185 | 185 | 185 | 185 | 185 | 185 | 185 | 185 | 185 | 185 | 185 | 185 | 250 | 250 | 250 | 250 | |
| MOTOR KW | 2.0 | 2.2 | 2.0 | 2.2 | 4.0 | 4.0 | 4.0 | 5.0 | 5.0 | 5.0 | 6.0 | 6.0 | 6.0 | HYD | HYD | 4.0 | 4.0 | 4.0 | 5.0 | 5.0 | 5.0 | 6.0 | 6.0 | 6.0 | 8.0 | 8.0 | HYD | HYD |
| VOLTAGEV | 12 | 12 | 12 | 12 | 12 | 12/24 | 24 | 12 | 12/24 | 24 | 12 | 12/24 | 24 | HYD | HYD | 12 | 12/24 | 24 | 12 | 12/24 | 24 | 12 | 12/24 | 24 | 12/24 | 24 | HYD | HYD |
| IP | | | ✓ | ✓ | | | | | | | | | | | | ✓ | ✓ | ✓ | ✓ | ✓ | ✓ | ✓ | ✓ | | | | | |

Thruster Controls

Lewmar's new range of thruster controls provide A superior tactile control of single or dual thruster installations. The controls can be fitted as standard to all Lewmar TT, RT, SRT & VRT thruster fitted with a blue box and to thrusters fitted with a blackbox using a controller adapter.

- Switch panel sealed from dust and moisture ingress
- Multi-function LED indicator displays System deployment, Thruster operation, Low voltage, Motor temperature warnings & fault conditions.
- Upgrade kit allows installation of single or dual controller into a thruster system with previous generation controllers
- Fit existing cutout fo Lewmar Joysticks

